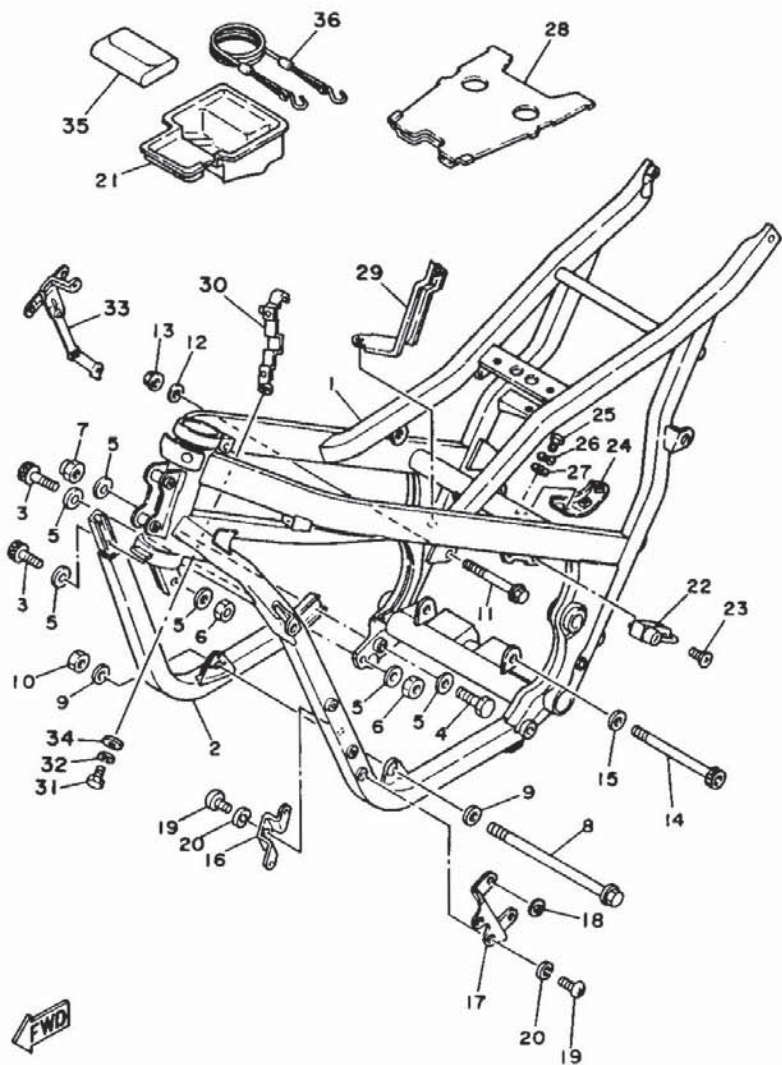


IGF171-5171

FIG. 17 FRAME

REF. NO.	PART NO.	DESCRIPTION	Q'TY	REMARKS
1	1GE-21110-10-35	FRAME COMP.	1	silver
2	47X-21140-00-35	DOWN TUBE COMP.	1	silver
3	91316-08035	BOLT	3	
4	90101-08629	BOLT	1	
5	90201-086J0	WASHER, plate	8	
6	95316-08600	NUT	3	
7	95616-08100	NUT, u	1	
8	90105-08346	BOLT, washer based	1	
9	92906-08200	WASHER, plain	2	
10	95316-08600	NUT	1	
11	97316-08115	BOLT	1	
12	90201-08730	WASHER, plate	1	
13	95706-08500	NUT, flange	1	
14	91316-08165	BOLT	1	
15	92906-08200	WASHER, plain	1	
16	47X-21287-01	BRACKET, regulator	1	
17	51X-21359-00	BRACKET, coil	1	
18	90201-07081	WASHER, plate	2	
19	92506-06020	SCREW, pan head	3	
20	92906-06100	WASHER, spring	3	
21	47X-21171-00	BOX, tool	1	
22	47X-21308-00	HELMET HANGER ASSY	1	
23	90149-06154	SCREW	1	
24	47X-2139H-00	BRACKET 6	1	
25	97301-06016	BOLT	1	
26	92901-06700	WASHER, wave	1	
27	92990-06600	WASHER, plate	1	
28	1GE-2117G-00	PROTECTOR	1	

D4

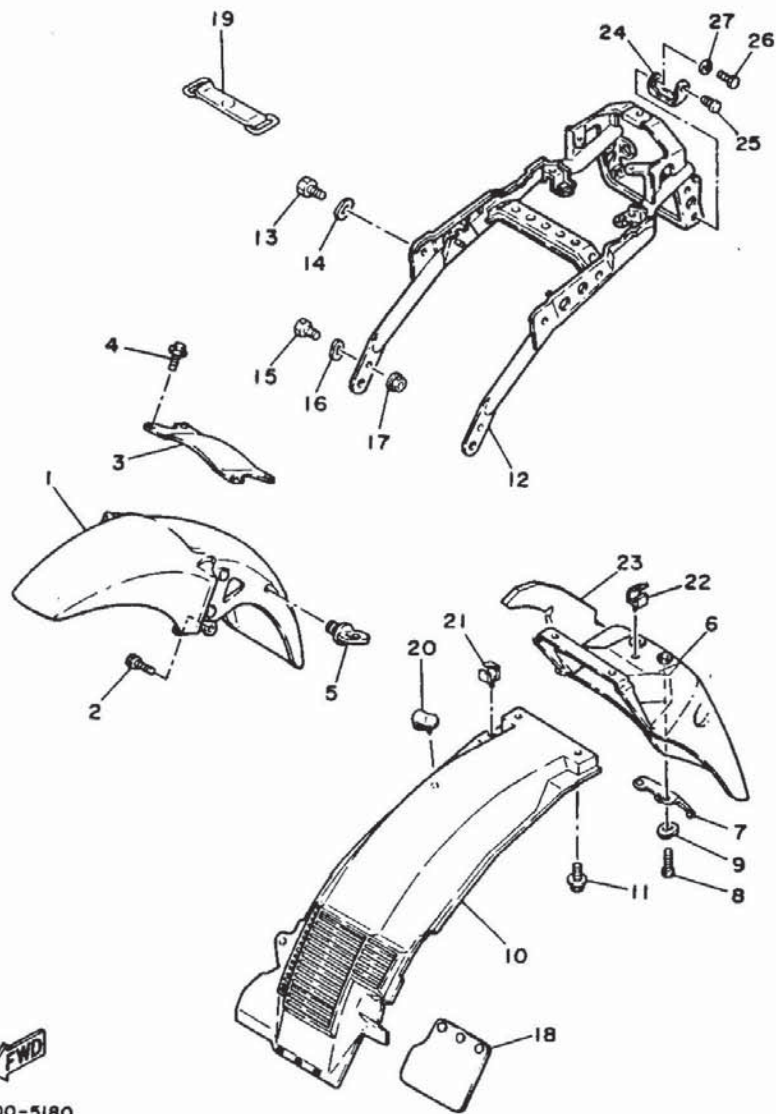


IGF171-5171

FIG. 17 FRAME

REF. NO.	PART NO.	DESCRIPTION	Q'TY	REMARKS
29	47X-21395-00	BRACKET, battery box 3	1	
30	1VU-2135Y-00	BRACKET, ignition coil	1	
31	97301-06020	BOLT	1	
32	92990-06100	WASHER, spring	1	
33	47X-2139J-00	BRACKET 7	1	
34	92901-06200	WASHER, plain	1	
35	47X-28100-00	TOOL KIT	1	
36	47X-2814A-00	WIRE, hook	1	

D5



1GE300-5180

FIG. 18 FENDER

REF. NO.	PART NO.	DESCRIPTION	Q'TY	REMARKS
1	47X-21510-00-3X	FRONT FENDER COMP.	1	chappy red
2	91311-06025	BOLT	4	
3	47X-2313A-00	BRACE, fork	1	
4	95023-06012	BOLT, flange	4	
5	1A8-21518-00	HOLDER, cable	1	
6	47X-21611-01	FENDER, rear	1	
7	47X-21628-00	REINFORCEMENT	1	
8	97302-06014	BOLT	2	
9	92901-06700	WASHER, wave	2	
10	47X-21629-03	GUARD, mud	1	
11	90119-06056	BOLT, with washer	3	
12	1GE-21645-00	STAY, rear	1	
13	97302-08020	BOLT	2	
14	92901-08700	WASHER, wave	2	
15	97302-08020	BOLT	2	
16	92901-08700	WASHER, wave	2	
17	95702-08100	NUT, flange	2	
18	34X-21691-00	FLAP	1	
19	122-82131-00	BAND, battery	1	
20	90464-10046	CLAMP	1	
21	90464-16021	CLAMP	1	
22	90464-16021	CLAMP	1	
23	1GE-21652-00	PROTECTOR	1	
24	47X-2172E-00	STAY, side cover 1	2	
25	10V-21717-00	DAMPER, side cover	2	
26	97302-08012	BOLT	2	
27	92901-08700	WASHER, wave	2	

D6

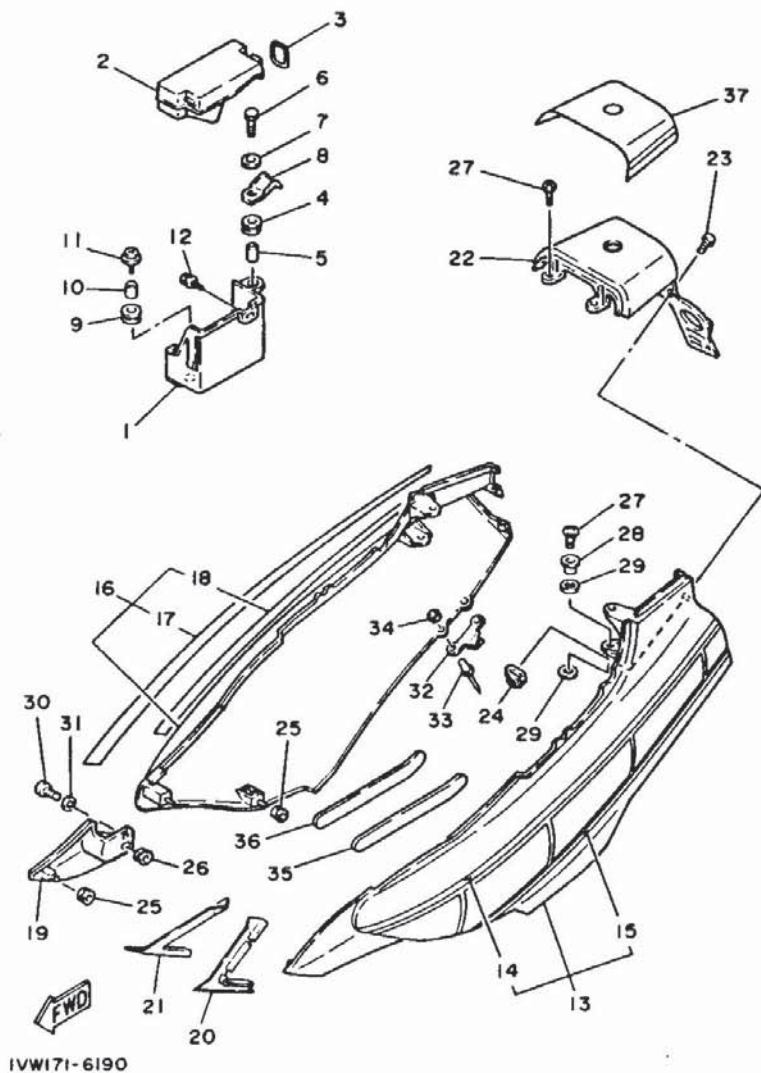
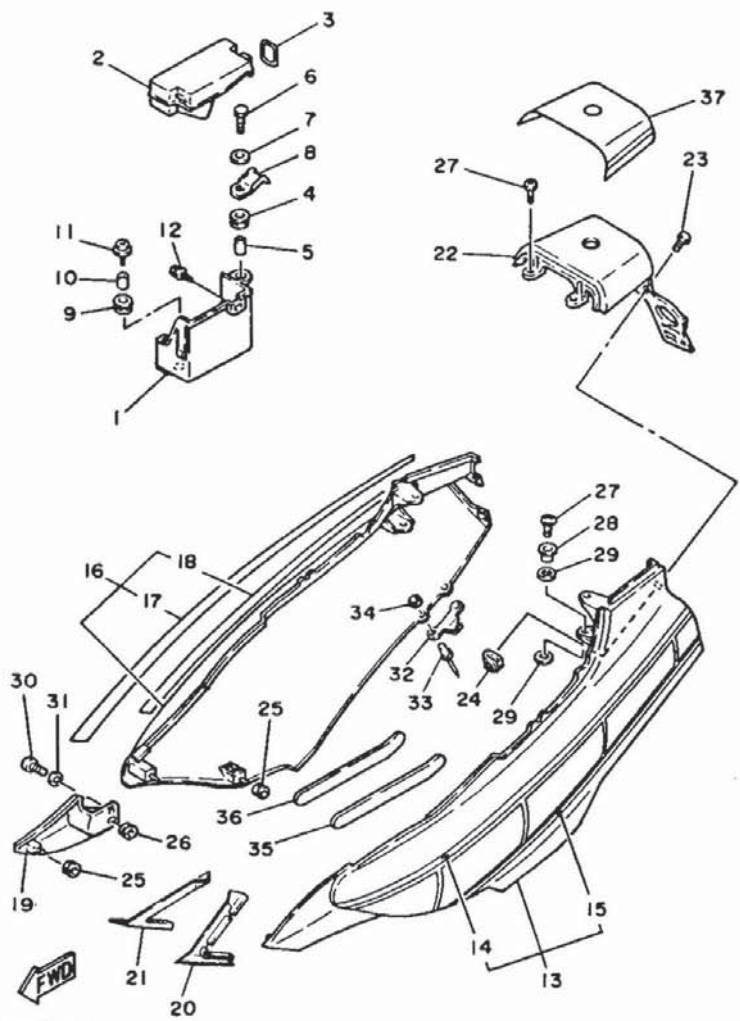


FIG. 19 SIDE COVER

REF. NO.	PART NO.	DESCRIPTION	Q'TY	REMARKS
1	47X-W2122-00	BOX COMP.	1	
2	47X-Y212E-00	COVER, battery	1	
3	47X-2176M-00	HOOK	1	
4	90480-16233	GROMMET	1	
5	90387-060A7	COLLAR	1	
6	90153-06037	SCREW, hexagon	1	
7	90201-063J2	WASHER, plate	1	
8	90465-08136	CLAMP	1	
9	90480-13197	GROMMET	1	
10	90387-060G7	COLLAR	1	
11	90159-06016	SCREW, with washer	1	
12	90119-06044	BOLT, with washer	1	
13	1VW-W2175-12-03	SIDE COVER 1	1	
14	51X-2173E-00	.GRAPHIC 1	1	for w/cpr
15	51X-2174G-00	.GRAPHIC 3	1	for w/cpr
16	1VW-W2173-12-03	SIDE COVER 2	1	
17	51X-2173F-00	.GRAPHIC 2	1	for w/cpr
18	51X-2174H-00	.GRAPHIC 4	1	for w/cpr
19	47X-W2174-00-98	COVER, side 3	1	low gloss black
20	1GE-21732-00	SEAL 1	1	
21	1GE-21735-00	SEAL 2	1	
22	47X-24756-00-3X	COVER, tail	1	
23	90157-05060	SCREW, pan head	4	
24	90183-05024	NUT, spring	4	
25	90480-01416	GROMMET	4	
26	90480-01176	GROMMET	1	
27	98906-06016	SCREW, bind	4	
28	90387-061M0	COLLAR	2	

D7

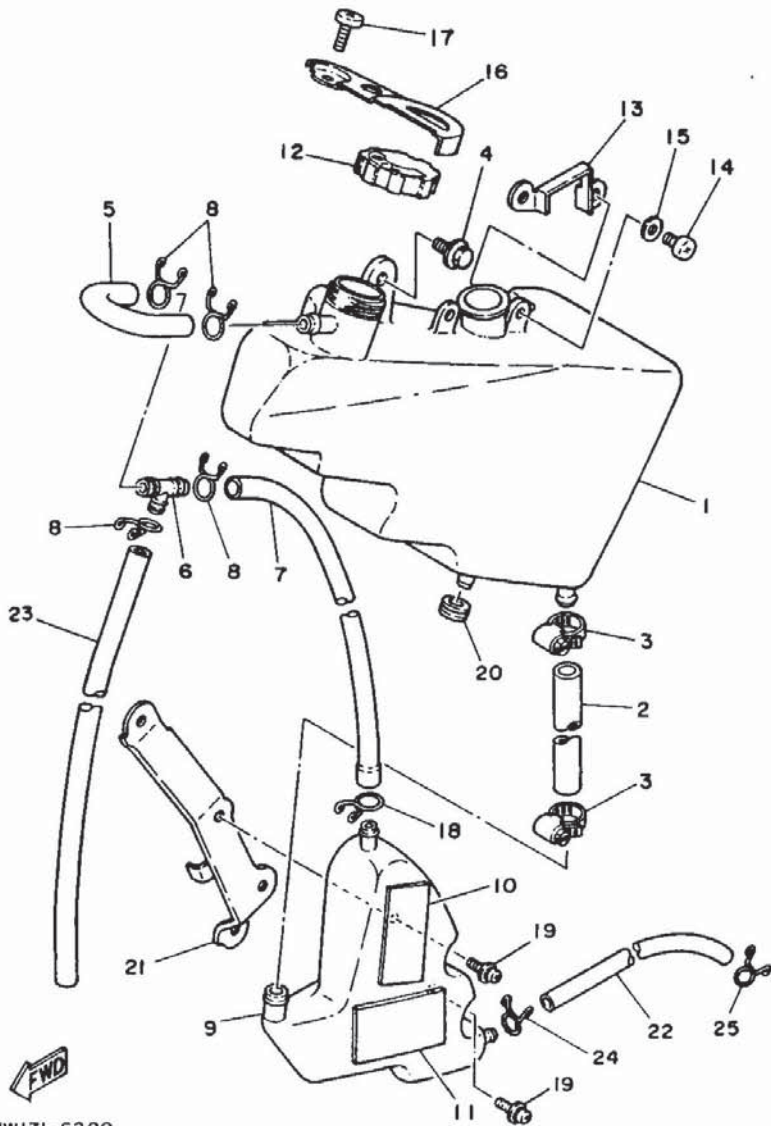


IVW171-6190

FIG. 19 SIDE COVER

REF. NO.	PART NO.	DESCRIPTION	Q'TY	REMARKS
29	90430-08193	GASKET	4	
30	90153-06022	SCREW, hexagon	1	
31	90201-060A3	WASHER, plate	1	
32	47X-2172K-00	BRACKET 1	2	
33	90267-32018	RIVET, blind	4	
34	92906-03200	WASHER	4	
35	47X-2173M-01	SEAL 3	1	
36	47X-2173N-01	SEAL 4	1	
37	52X-24757-00	GRAPHIC, tail cover	1	

D8

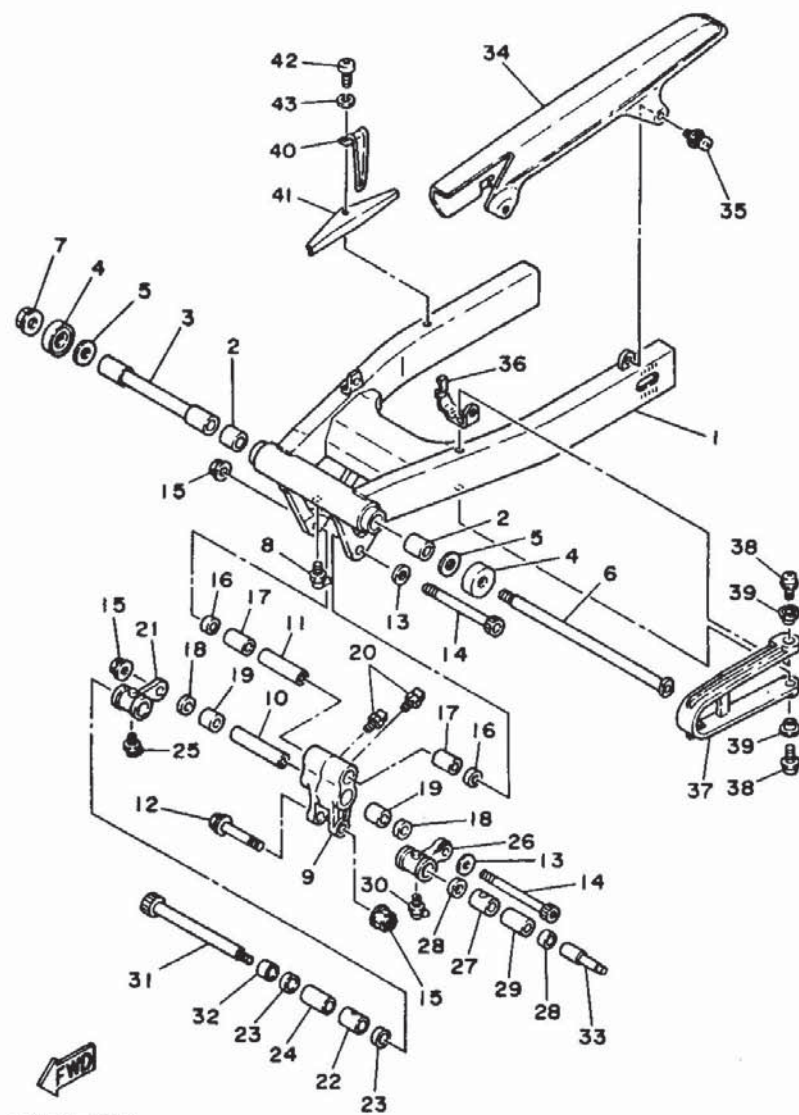


1VW171-6200

FIG. 20 OIL TANK

REF. NO.	PART NO.	DESCRIPTION	Q'TY	REMARKS
1	1GE-21751-00	TANK, oil	1	
2	90445-164A0	HOSE	1	
3	90460-15227	CLAMP, hose	2	
4	90119-06044	BOLT, with washer	1	
5	47X-21745-01	PIPE, oil tank breather	1	
6	90413-10018	WAY 3	1	
7	47X-2174N-00	PIPE, oil tank	1	
8	90467-10008	CLIP	4	
9	47X-21733-01	SUB TANK, oil	1	
10	5G3-82126-00	PAD, battery	1	
11	29N-21747-00	DAMPER	1	
12	47X-21771-00	BODY, cap	1	
13	47X-2172M-00	BRACKET 3	1	
14	98506-05010	SCREW, pan head	2	
15	90201-05725	WASHER, plate	2	
16	47X-2172N-01	BRACKET 4	1	
17	90146-06016	SCREW, oval fillister	1	
18	90467-12052	CLIP	1	
19	90159-06060	SCREW, with washer	2	
20	90480-22084	GROMMET	1	
21	1VU-2172L-00	BRACKET 2	1	
22	90445-094A2	HOSE	1	
23	90445-114A1	HOSE	1	
24	90467-09005	CLIP	1	
25	90467-08003	CLIP	1	

D9

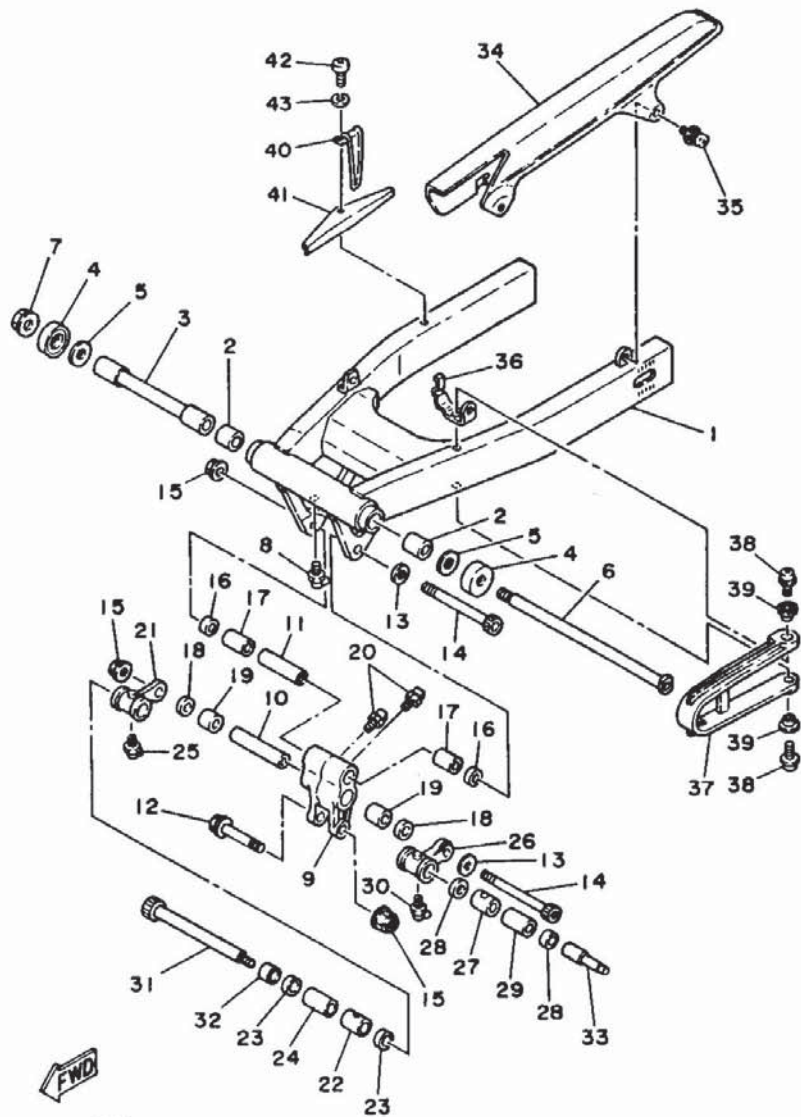


IVW171-6210

FIG. 21 REAR ARM

REF. NO.	PART NO.	DESCRIPTION	Q'TY	REMARKS
1	47X-22110-00	REAR ARM COMP.	1	
2	93320-32403	BEARING	2	
3	47X-22184-00	BUSH	1	
4	47X-22129-00	COVER, thrust 2	2	
5	90201-161J2	WASHER, plate	2	
6	47X-22141-01	SHAFT, pivot	1	
7	90185-14129	NUT, self-locking	1	
8	93700-06005	NIPPLE, grease	1	
9	47X-2217M-00	ARM 1	1	
10	90387-107K2	COLLAR	1	
11	90387-107K3	COLLAR	1	
12	90105-10340	BOLT, washer based	1	
13	90201-101J1	WASHER, plate	2	
14	90110-10081	BOLT, hexagon socket head	2	
15	90179-10280	NUT	3	
16	93109-17048	OIL SEAL	2	
17	93315-31732	BEARING, cylindrical	2	
18	93109-20029	OIL SEAL	2	
19	93317-32034	BEARING, cylindrical	2	
20	93700-06005	NIPPLE, grease	2	
21	47X-2217A-00	ARM, relay	1	
22	90380-18140	BUSH, solid	1	
23	93109-18020	OIL SEAL	2	
24	90387-107K4	COLLAR	1	
25	93700-06005	NIPPLE, grease	1	
26	47X-2217E-00	ARM, relay 2	1	
27	90380-18140	BUSH, solid	1	
28	93109-18020	OIL SEAL	2	

D10



1VW171-6210

FIG. 21 REAR ARM

REF. NO.	PART NO.	DESCRIPTION	Q'TY	REMARKS
29	90387-107K4	COLLAR	1	
30	93700-06005	NIPPLE, grease	1	
31	90110-10086	BOLT, hexagon socket head	1	
32	90387-105L4	COLLAR	1	
33	90179-10462	NUT	1	
34	47X-22311-00	CASE, chain	1	
35	90159-06084	SCREW, with washer	2	
36	47X-22321-00	STAY, chain case 1	1	
37	47X-22147-00	PROTECTOR, chain	1	
38	90149-06011	SCREW	2	
39	90387-06681	COLLAR	2	
40	47X-25876-51	HOLDER, brake hose 2	1	
41	1VU-22167-00	GUIDE	1	
42	92501-06012	SCREW, pan head	1	
43	92990-06100	WASHER, spring	1	

D11

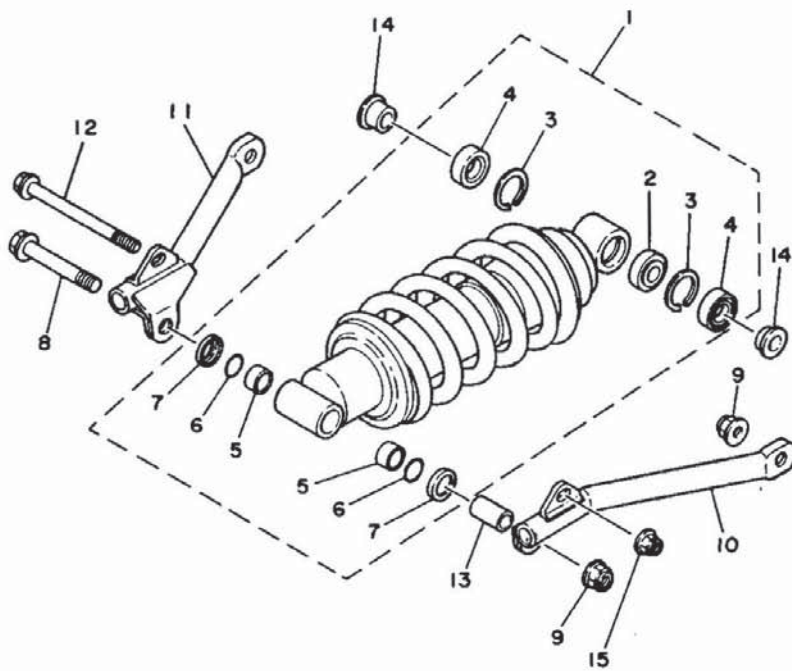


FIG. 22 REAR SUSPENSION

REF. NO.	PART NO.	DESCRIPTION	Q'TY	REMARKS
1	47X-22210-00-33	SHOCK ABSORBER ASSY, rear	1	yamaha black
2	93399-99919	.BEARING	1	
3	93440-30113	.CIRCLIP	2	
4	93101-16131	.OIL SEAL	2	
5	90383-18028	.BUSH, formed	2	
6	93210-18608	.O-RING	2	
7	31M-22473-00	.HOUSING, seal ring	2	
8	90105-10340	BOLT, washer based	1	
9	90179-10280	NUT	2	
10	47X-2217F-01	ROD, connecting 1	1	
11	47X-2217G-01	ROD, connecting 2	1	
12	90105-08120	BOLT, washer based	1	
13	90387-106K8	COLLAR	1	
14	90387-124L0	COLLAR	2	
15	90185-08113	NUT, self-locking	1	



47X332-4221

D12

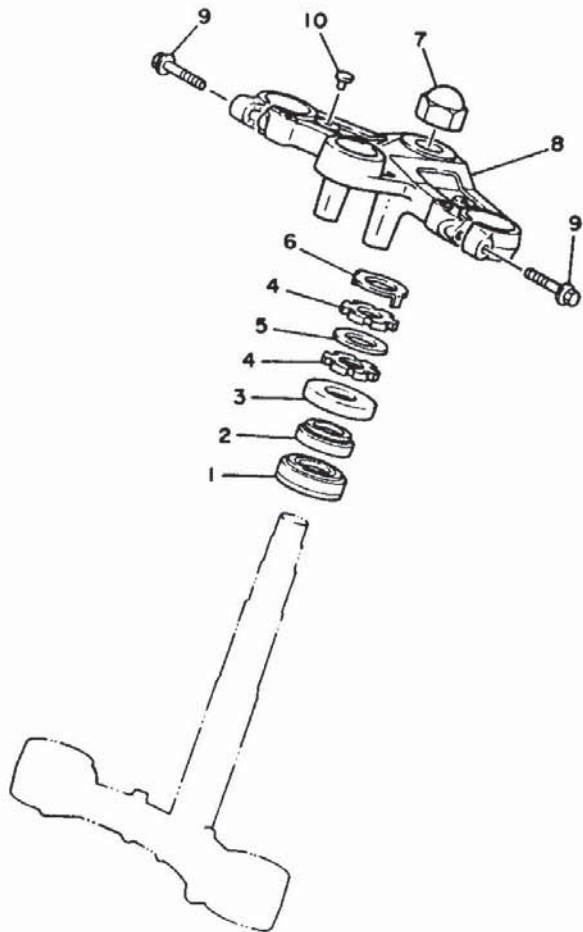


FIG. 23 STEERING

REF. NO.	PART NO.	DESCRIPTION	Q'TY	REMARKS
1	93332-00008	BEARING	1	
2	93332-00023	BEARING	1	
3	47X-23415-00	COVER, ball race 1	1	
4	90179-25033	NUT	2	
5	90202-26142	WASHER, plate	1	
6	26H-23418-01	WASHER, special	1	
7	90176-22050	NUT, crown	1	
8	1GE-23435-00-39	CROWN, handle	1	clear no buffing
9	95821-08040	BOLT, flange	2	
10	10L-23469-00	CAP, bolt	2	



IGF171-5230

D13

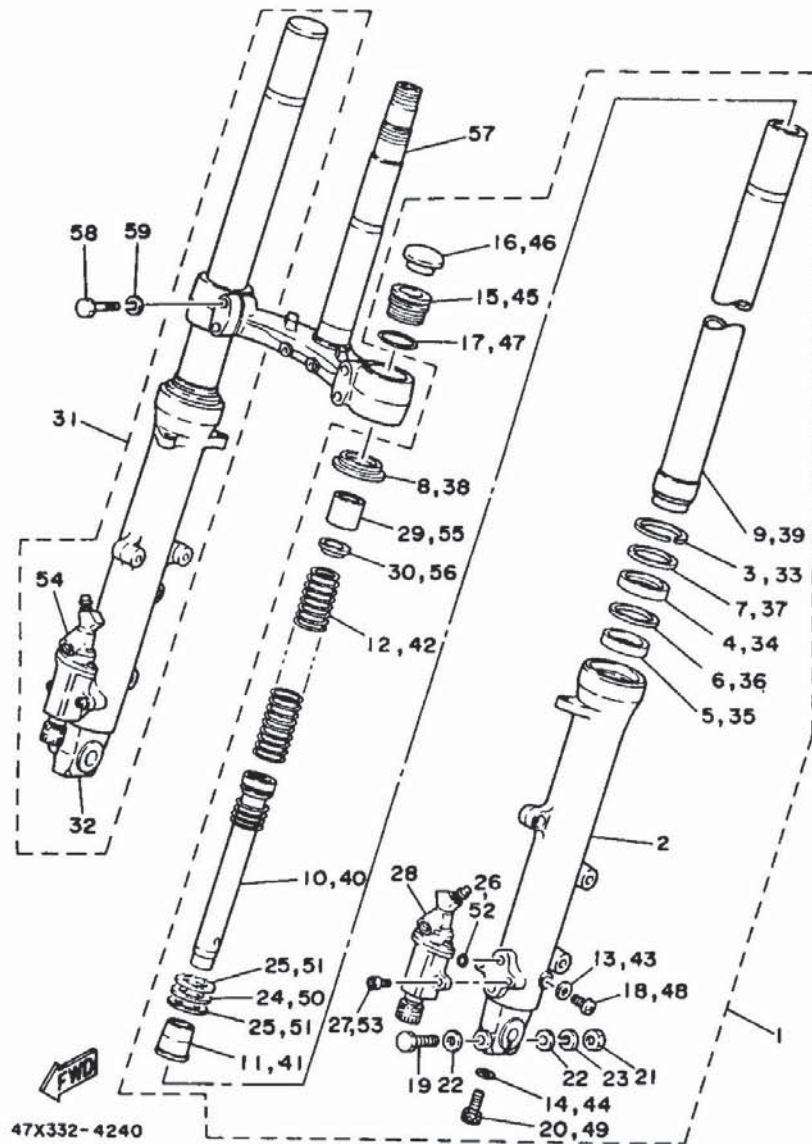


FIG. 24 FRONT FORK

REF. NO.	PART NO.	DESCRIPTION	Q'TY	REMARKS
1	1GE-23102-00	FRONT FORK ASSY (L.H)	1	
2	47X-23126-01	.TUBE, outer 1	1	
3	3R4-23153-00	.RING, snap	1	
4	41Y-23145-00	.OIL SEAL	1	
5	31A-23125-31	.METAL, slide 1	1	
6	31A-23149-31	.WASHER, spring upper	1	
7	41Y-23146-00	.WASHER, oil seal	1	
8	31A-23144-30	.SEAL, dust	1	
9	1GE-23110-00	.INNER TUBE COMP.1	1	
10	47X-23170-01	.CYLINDER COMP., front fork	1	
11	22N-23173-00	.SPINDLE, taper	1	
12	47X-23141-01	.SPRING, front fork	1	
13	122-23129-00	.GASKET, drain plug	1	
14	509-23158-L0	.GASKET	1	
15	31A-23111-31	.BOLT, cap	1	
16	166-23168-00	.CAP, front fork	1	
17	1M1-23114-L0	.GASKET	1	
18	122-23119-01	.PLUG, drain	1	
19	4U8-23356-10	.BOLT 2	1	
20	278-23181-50	.BOLT, hexagon socket head	1	
21	95311-08600	.NUT	1	
22	90201-08544	.WASHER, plate	2	
23	92990-08100	.WASHER, spring	1	
24	22N-2319L-00	.WASHER	1	
25	22N-2319M-00	.SPRING, valve	2	
26	22N-23147-00	.O-RING	2	
27	22N-23346-00	.BOLT 1	2	
28	47X-2310E-01	.A.N.D. MODULATOR ASS'Y 1	1	

D14

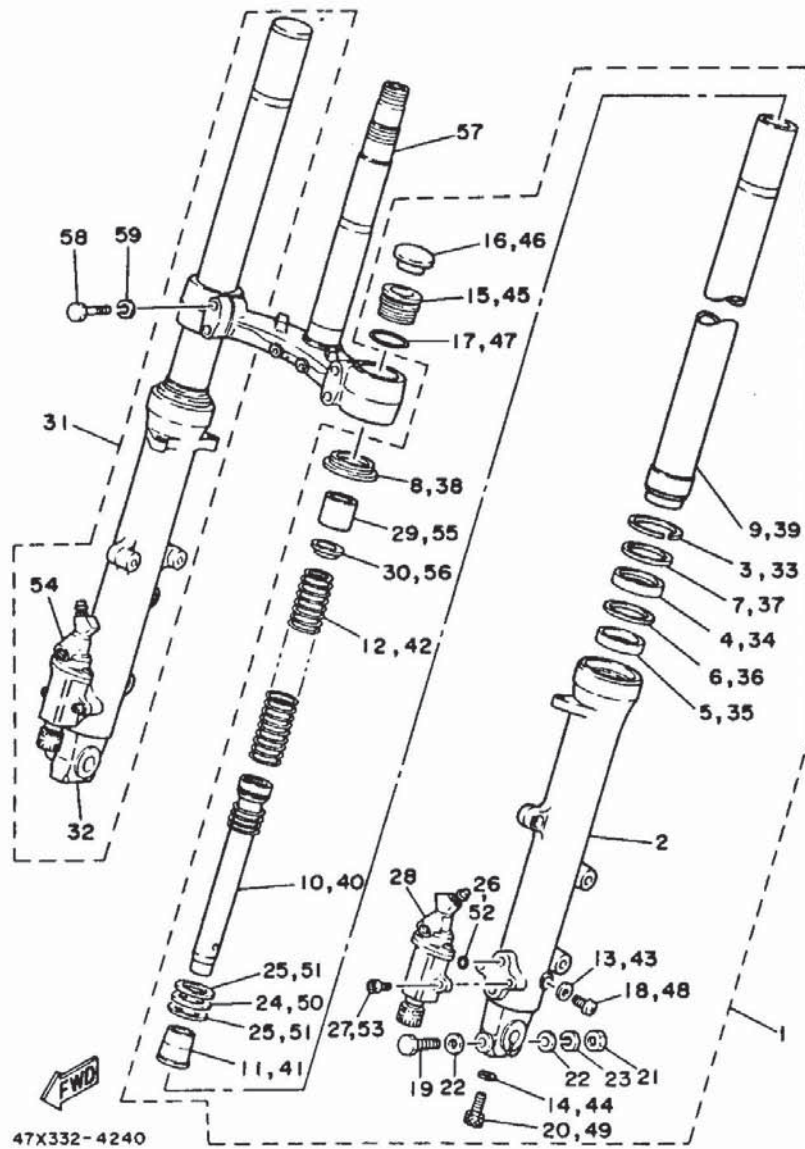


FIG. 24 FRONT FORK

REF. NO.	PART NO.	DESCRIPTION	Q'TY	REMARKS
29	47X-23118-01	.SPACER	1	
30	1W1-23142-L0	.SEAT, spring upper	1	
31	1GE-23103-00	FRONT FORK ASSY (R.H)	1	
32	47X-23136-01	.TUBE, outer 2	1	
33	3R4-23153-00	.RING, snap	1	
34	41Y-23145-00	.OIL SEAL	1	
35	31A-23125-31	.METAL, slide 1	1	
36	31A-23149-31	.WASHER, spring upper	1	
37	41Y-23146-00	.WASHER, oil seal	1	
38	31A-23144-30	.SEAL, dust	1	
39	1GE-23110-00	.INNER TUBE COMP.1	1	
40	47X-23170-01	.CYLINDER COMP., front fork	1	
41	22N-23173-00	.SPINDLE, taper	1	
42	47X-23141-01	.SPRING, front fork	1	
43	122-23129-00	.GASKET, drain plug	1	
44	509-23158-L0	.GASKET	1	
45	31A-23111-31	.BOLT, cap	1	
46	16G-23168-00	.CAP, front fork	1	
47	1W1-23114-L0	.GASKET	1	
48	122-23119-01	.PLUG, drain	1	
49	278-23181-50	.BOLT, hexagon socket head	1	
50	22N-2319L-00	.WASHER	1	
51	22N-2319M-00	.SPRING, valve	2	
52	22N-23147-00	.O-RING	2	
53	22N-23346-00	.BOLT 1	2	
54	47X-2310F-01	.A.N.D. MOSURATOR ASS'Y 2	1	
55	47X-23118-01	.SPACER	1	
56	1W1-23142-L0	.SEAT, spring upper	1	

D15

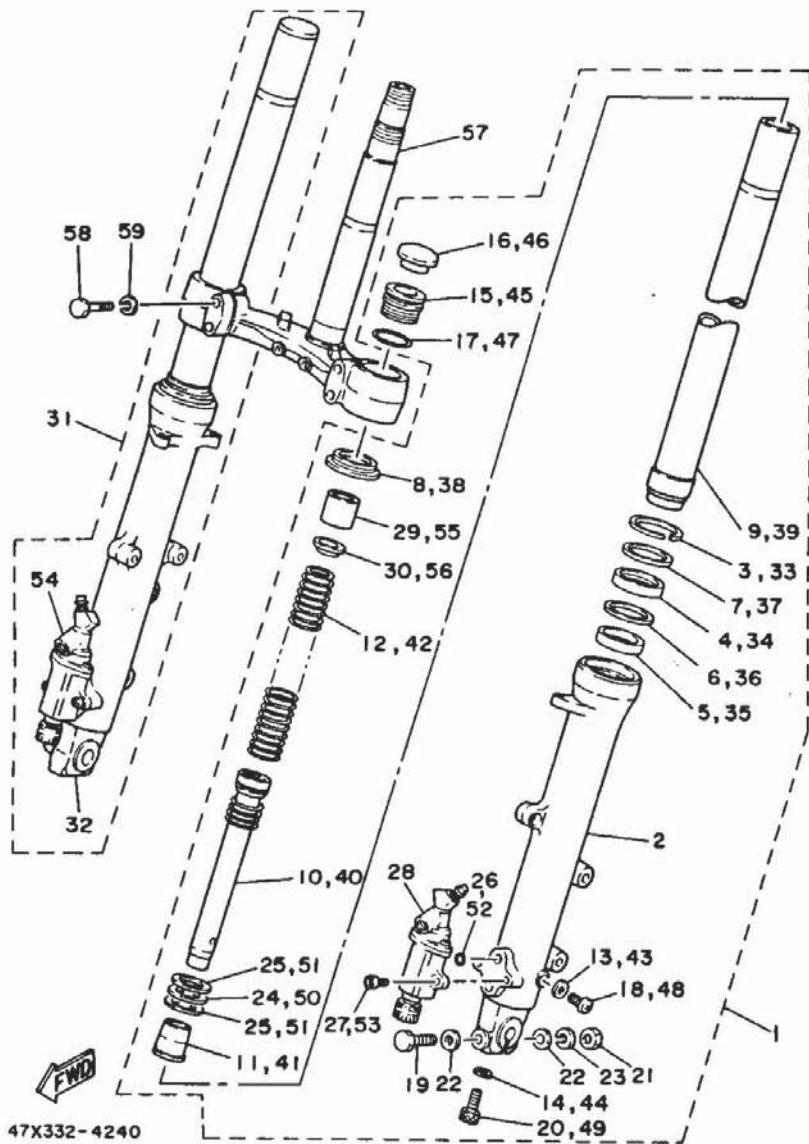


FIG. 24 FRONT FORK

REF. NO.	PART NO.	DESCRIPTION	Q'TY	REMARKS
57	47X-23340-01-39	UNDER BRACKET COMP.	1	clear no buffing
58	97321-08040	BOLT	4	
59	92990-08100	WASHER, spring	4	

E2

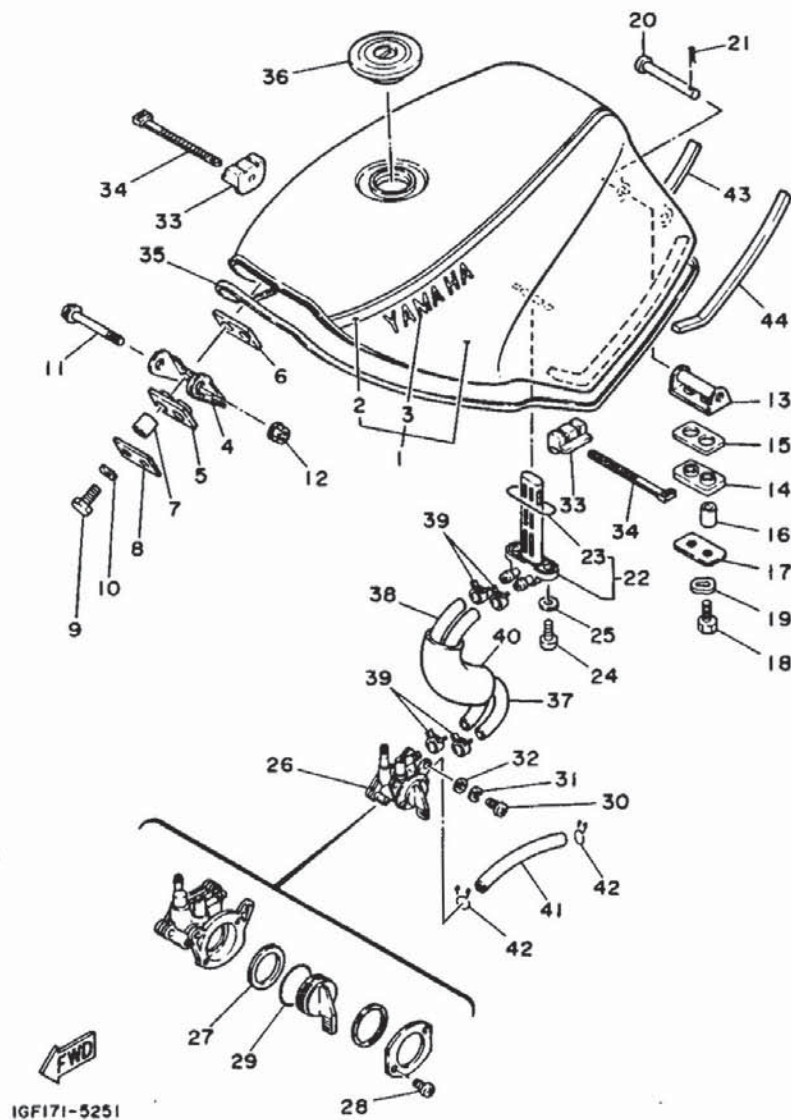
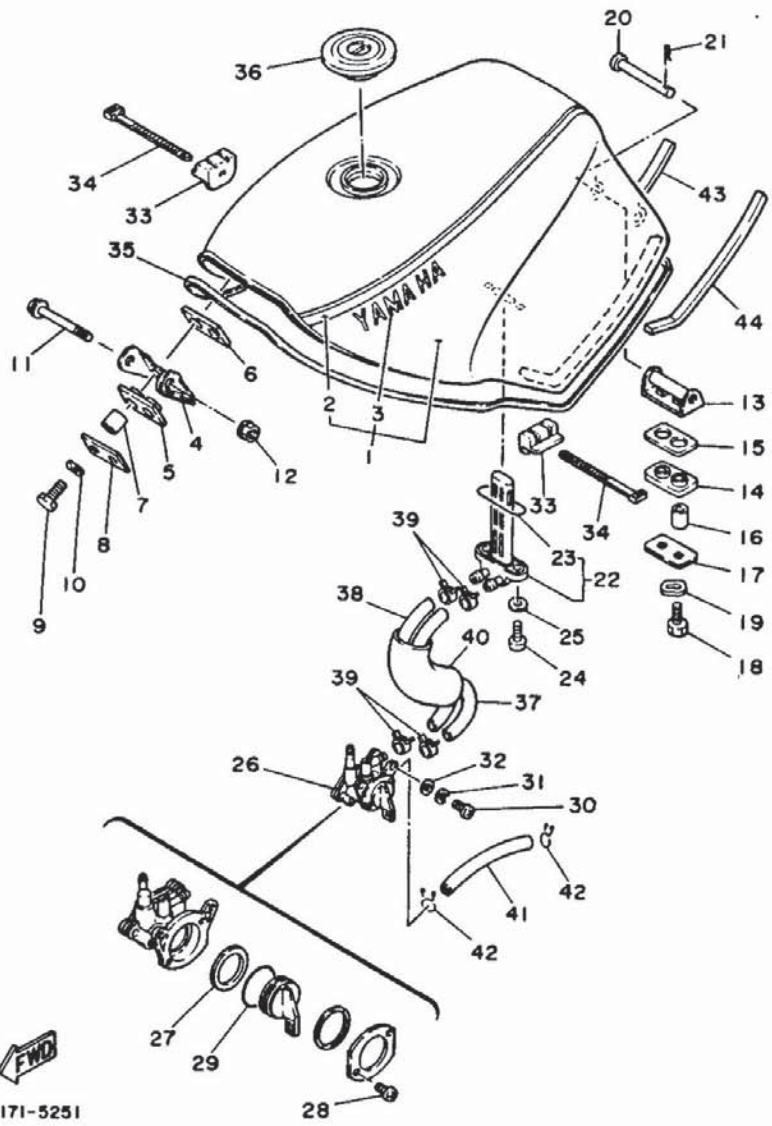


FIG. 25 FUEL TANK

REF. NO.	PART NO.	DESCRIPTION	Q'TY	REMARKS
1	1GE-24110-00-02	FUEL TANK COMP.	1	white/chappy red
2	51X-24240-01	.GRAPHIC SET	1	for w/cpr
3	51X-24161-00	.EMBLEM 1	2	for w/cpr
4	47X-24191-00	BRACKET, fuel tank 1	1	
5	47X-24181-00	DAMPER, locating 1	1	
6	47X-24183-00	DAMPER, locating 3	1	
7	90387-06299	COLLAR	2	
8	47X-24186-00	WASHER, special	1	
9	97302-06025	BOLT	2	
10	92901-06700	WASHER, wave	2	
11	90105-06301	BOLT, washer based	1	
12	95701-06500	NUT, flange	1	
13	1GE-24192-00	BRACKET, fuel tank 2	1	
14	47X-24181-00	DAMPER, locating 1	1	
15	47X-24183-00	DAMPER, locating 3	1	
16	90387-06299	COLLAR	2	
17	47X-24186-00	WASHER, special	1	
18	97302-06025	BOLT	2	
19	92901-06700	WASHER, wave	2	
20	91702-06075	PIN, clevis	1	
21	90468-12006	CLIP	1	
22	47X-24560-00	FILTER ASSY	1	
23	2G2-24512-00	.O-RING	1	
24	90149-06008	SCREW	2	
25	90202-06010	WASHER, plate	2	
26	47X-24500-00	FUEL COCK ASSY 1	1	
27	47X-24523-00	.VALVE	1	
28	97801-03008	.SCREW, pan head	2	

E3



IGF171-5251

FIG. 25 FUEL TANK

REF. NO.	PART NO.	DESCRIPTION	Q'TY	REMARKS
29	2G2-24534-00	.O-RING	1	
30	92506-06012	SCREW, pan head	2	
31	92906-06100	WASHER, spring	2	
32	92906-06600	WASHER, plate	2	
33	47X-24182-00	DAMPER, locating 2	4	
34	90465-13152	CLAMP	4	
35	47X-24188-01	MOLD, fuel tank	1	
36	47X-24602-00	CAP ASSY	1	
37	47X-24311-00	PIPE, fuel 1	1	
38	47X-24312-00	PIPE 2	1	
39	90467-14057	CLIP	4	
40	47X-24327-00	PROTECTOR, pipe	1	
41	90445-133A5	HOSE	1	
42	90467-14057	CLIP	2	
43	1GE-2414G-00	SEAL	1	
44	1GE-2414E-00	SEAL 2	1	

E4

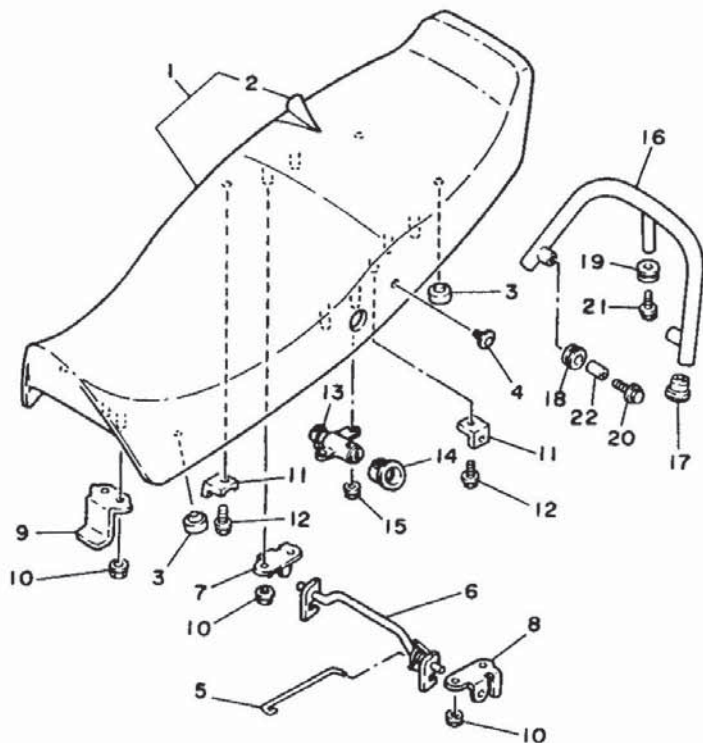


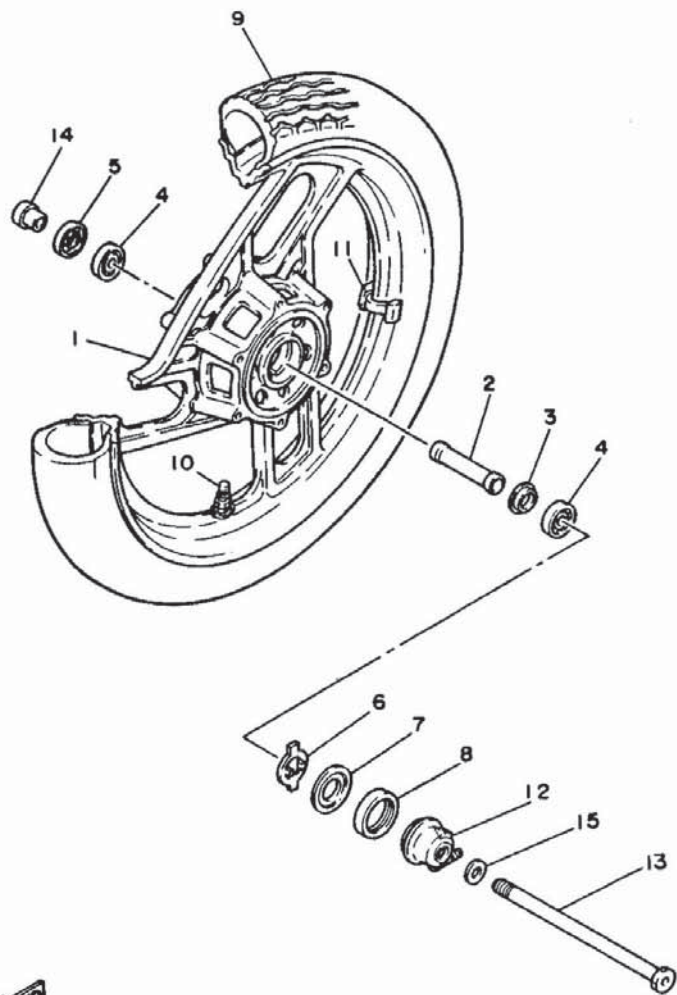
FIG. 26 SEAT

REF. NO.	PART NO.	DESCRIPTION	Q'TY	REMARKS
1	47X-W2472-00	DOUBLE SEAT ASSY	1	
2	47X-24731-00	.COVER, seat	1	
3	116-24741-00	PAD, seat	8	
4	90110-06087	BOLT, hexagon socket head	2	
5	47X-2478F-00	ROD, connecting	1	
6	47X-24776-00	LEVER, seat	1	
7	47X-24728-01	BRACKET, seat	1	
8	47X-24718-01	BRACKET, seat	1	
9	47X-24748-00	BRACKET, seat	1	
10	95702-06100	NUT, flange	6	
11	4K0-24748-00	BRACKET, seat	2	
12	95802-06012	BOLT, flange	2	
13	47X-24705-00	SEAT LOCK ASSY	1	
14	47X-24796-00	COVER	1	
15	95702-05100	NUT, flange	2	
16	47X-24773-01-98	HANDLE, seat	1	
17	90338-15110	PLUG	2	
18	90480-15396	GROMMET	2	
19	90480-15397	GROMMET	1	
20	90105-08378	BOLT, washer based	2	
21	90105-08377	BOLT, washer based	1	
22	90560-08237	SPACER	2	



52X171-5260

E5



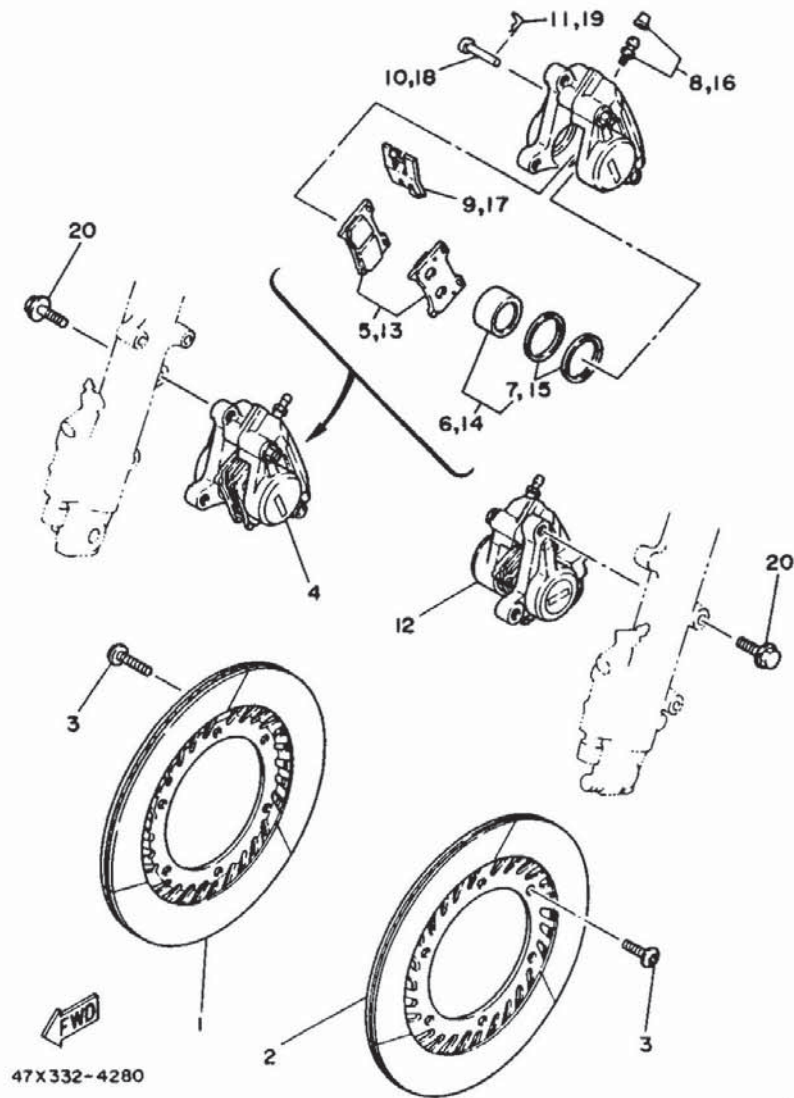
47X332-4270

FIG. 27 FRONT WHEEL

REF. NO.	PART NO.	DESCRIPTION	Q'TY	REMARKS
1	1GE-25168-00-8L	CAST WHEEL, front	1	nebular gold
2	90560-15255	SPACER	1	
3	146-25115-00	FLANGE, spacer 1	1	
4	93306-30203	BEARING (B6302Z)	2	
5	93102-22014	OIL SEAL	1	
6	341-25149-00	CLUTCH, meter	1	
7	341-25846-00	RETAINER, clutch	1	
8	93105-45017	OIL SEAL	1	
9	94112-165H3	TIRE (120/80 V16)	1	yokohama
10	93900-00018	VALVE, rim	1	yokohama
11	29L-25398-00	BALANCER, wheel (10G)	1	UN
	29L-25398-10	BALANCER, wheel (20G)	1	UN
	29L-25398-20	BALANCER, wheel (30G)	1	UN
12	3M5-25190-00	GEAR UNIT ASSY	1	
13	47X-25181-00	AXLE, wheel	1	
14	90387-15550	COLLAR	1	
15	90201-15238	WASHER, plate	1	

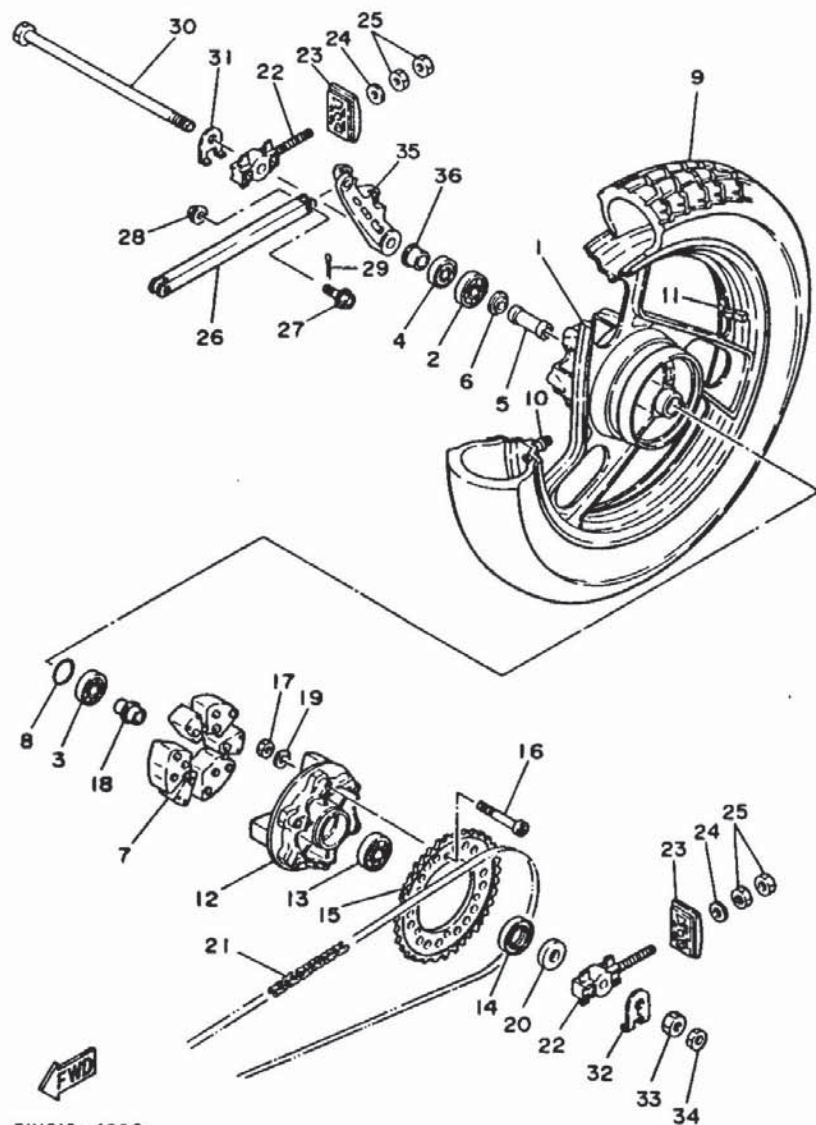
E6

FIG. 28 FRONT BRAKE CALIPER



REF. NO.	PART NO.	DESCRIPTION	Q'TY	REMARKS
1	31A-25831-01	DISC, brake (RIGHT)	1	
2	31A-25831-11	DISC, brake (LEFT)	1	
3	90109-08718	BOLT	12	
4	47X-25810-00	CALIPER ASSY (RIGHT)	1	
5	47X-W0045-00	.BRAKE PAD KIT, front	1	
6	31A-W0057-00	.PISTON ASSY, caliper	1	
7	31A-W0047-00	..CALIPER SEAL KIT	1	
8	26H-W0048-00	.BREED SCREW KIT	1	
9	26H-25919-00	.SUPPORT, pad	1	
10	26H-25924-00	.PIN, pad	2	
11	26H-25925-00	.CLIP	2	
12	47X-25810-10	CALIPER ASSY (LEFT)	1	
13	47X-W0045-00	.BRAKE PAD KIT, front	1	
14	31A-W0057-00	.PISTON ASSY, caliper	1	
15	31A-W0047-00	..CALIPER SEAL KIT	1	
16	26H-W0048-00	.BREED SCREW KIT	1	
17	26H-25919-00	.SUPPORT, pad	1	
18	26H-25924-00	.PIN, pad	2	
19	26H-25925-00	.CLIP	2	
20	90105-10308	BOLT, washer based	4	

E7

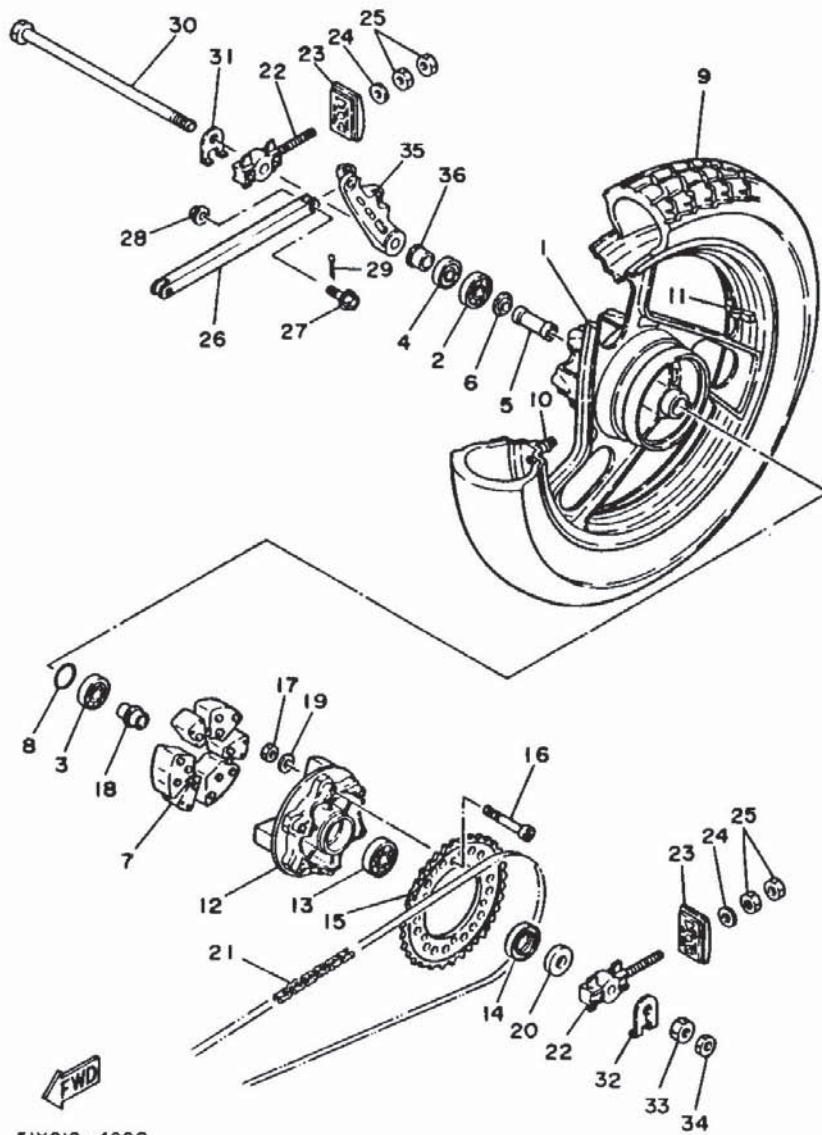


51X010-4290

FIG. 29 REAR WHEEL

REF. NO.	PART NO.	DESCRIPTION	Q'TY	REMARKS
1	47X-25338-20-8L	CAST WHEEL, rear	1	nebular gold
2	93306-30306	BEARING (B6303)	1	
3	93306-20314	BEARING (B6203)	1	
4	93102-25044	OIL SEAL	1	
5	90560-17260	SPACER	1	
6	33M-25315-00	FLANGE, spacer	1	
7	29L-25364-00	DAMPER	3	
8	93210-48530	O-RING	1	
9	94113-182N1	TIRE (130/80 V18)	1	yokohama
10	93900-00018	VALVE, rim	1	yokohama
11	29L-25398-00	BALANCER, wheel (10G)	1	UN
	29L-25398-10	BALANCER, wheel (20G)	1	UN
	29L-25398-20	BALANCER, wheel (30G)	1	UN
12	47X-25366-01	CLUTCH, hub	1	
13	93306-37203	BEARING	1	
14	93105-42024	OIL SEAL	1	
15	52X-25440-20-33	SPROCKET, driven (40T)	1	yamaha black
16	90110-08094	BOLT, hexagon socket head	6	
17	90185-08089	NUT, self-locking	6	
18	90387-177K0	COLLAR	1	
19	90201-081A6	WASHER, plate	6	
20	90387-177K1	COLLAR	1	
21	94580-79102	CHAIN (D.I.D 50V 102L)	1	
22	47X-25388-00	PULLER, chain 1	2	
23	47X-22174-00	END 1	2	
24	92901-08600	WASHER, plate	2	
25	95301-08600	NUT	4	
26	47X-25371-00	BAR, tension	1	

E8

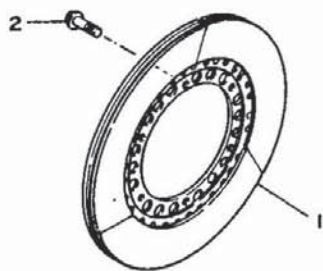
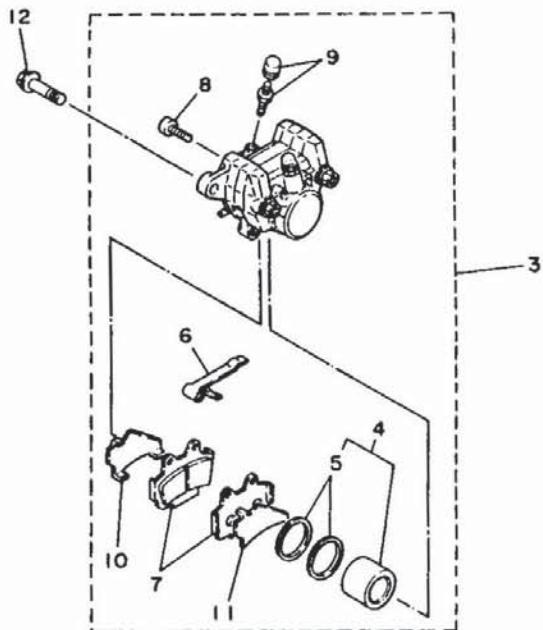


51X010-4290

FIG. 29 REAR WHEEL

REF. NO.	PART NO.	DESCRIPTION	Q'TY	REMARKS
27	90105-08321	BOLT, washer based	2	
28	95701-08500	NUT, flange	2	
29	91401-20015	PIN, cotter	2	
30	47X-25381-01	AXLE, wheel	1	
31	90214-17034	WASHER, claw	1	
32	90214-16035	WASHER, claw	1	
33	90170-16342	NUT	1	
34	90170-16278	NUT	1	
35	47X-25819-01	BRACKET, caliper	1	
36	90387-170J6	COLLAR	1	

E9

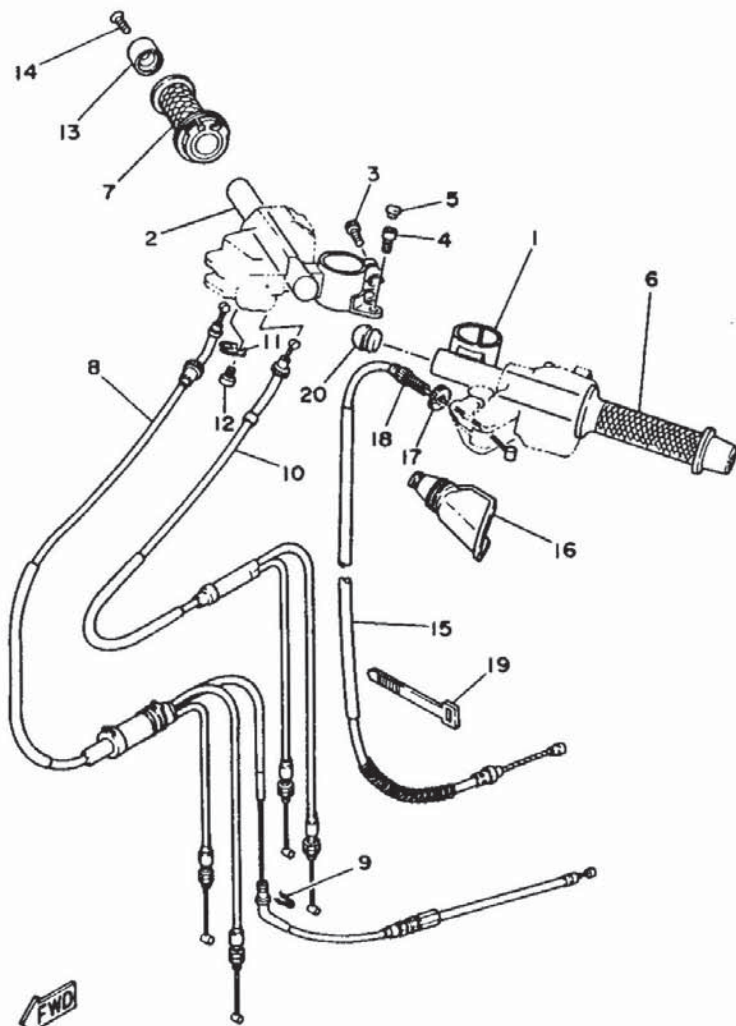


47X332-4300

FIG. 30 REAR BRAKE CALIPER

REF. NO.	PART NO.	DESCRIPTION	Q'TY	REMARKS
1	47X-25831-50	DISC, brake	1	
2	90109-08718	BOLT	6	
3	47X-25810-50	CALIPER ASSY	1	
4	51L-W0057-00	.PISTON ASSY, caliper	1	
5	51L-W0047-00	..CALIPER SEAL KIT	1	
6	47X-25919-00	.SUPPORT, pad	1	
7	51L-W0046-00	.BRAKE PAD KIT, rear	1	
8	51L-25924-00	.PIN, pad	2	
9	51L-W0048-00	.BREED SCREW KIT	2	
10	47X-25827-00	.SHIM, caliper	1	
11	47X-25827-10	.SHIM, caliper	1	
12	90105-10308	BOLT, washer based	2	

E10

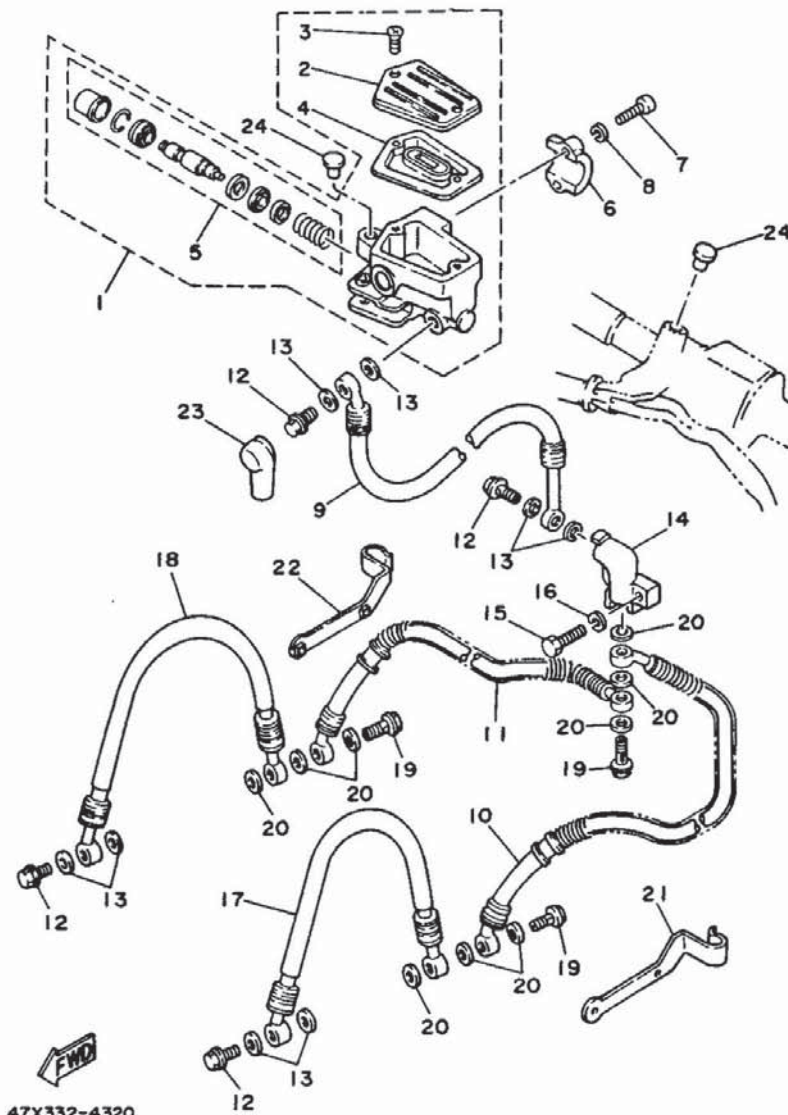


52X171-5310

FIG. 31 STEERING HANDLE. CABLE

REF. NO.	PART NO.	DESCRIPTION	Q'TY	REMARKS
1	47X-26121-00-98	HANDLEBAR (LEFT)	1	low gloss black
2	47X-26122-00-98	HANDLEBAR (RIGHT)	1	low gloss black
3	91316-08025	BOLT	4	
4	91316-06016	BOLT	2	
5	2H9-23469-00	CAP, bolt	2	
6	47X-26241-00	GRIP (L.H)	1	
7	47X-26240-00	GRIP ASSY	1	
8	47X-26260-00	CABLE ASSY, throttle & pump	1	
9	90468-08086	CLIP	1	
10	47X-26260-50	CABLE ASSY, throttle & pump	1	
11	5H0-26393-00	HOLDER	1	
12	98506-05008	SCREW, pan head	1	
13	29L-26246-00	END, grip	2	
14	92706-06030	SCREW, flat head	2	
15	47X-26335-00	CABLE, clutch	1	
16	31A-26372-00	COVER, handle lever	1	
17	90179-08148	NUT	1	
18	90123-08046	BOLT	1	
19	435-13474-00	BAND	1	
20	90338-19166	PLUG	2	

E11

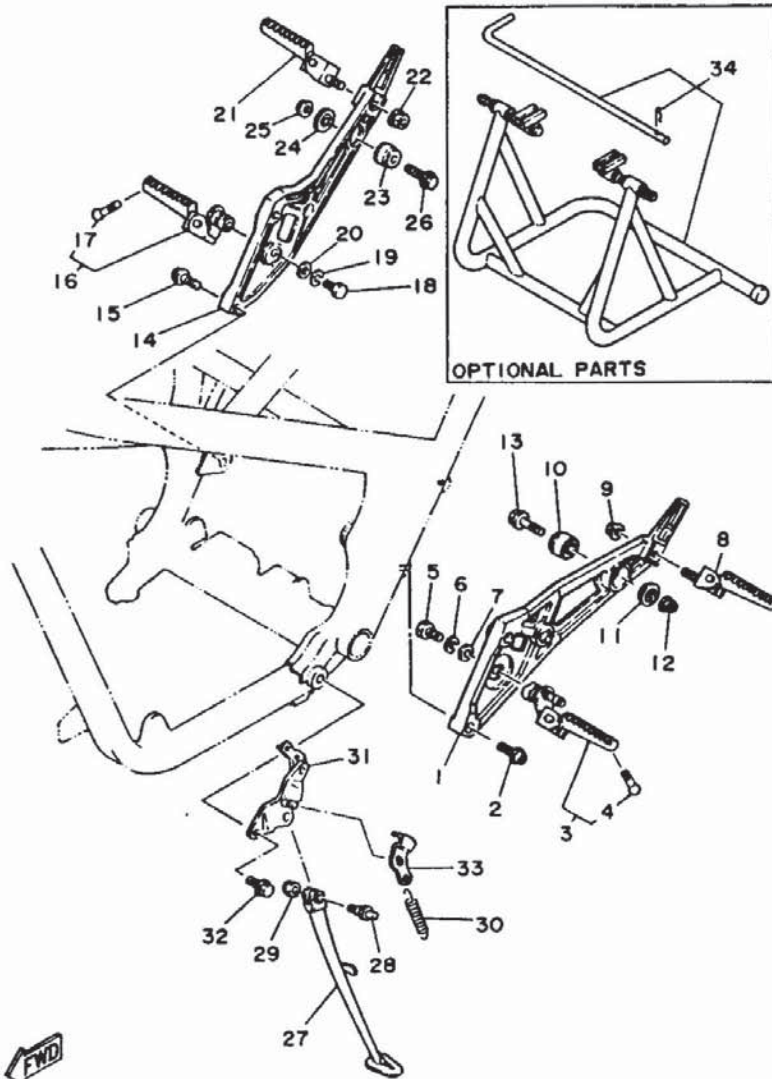


47X332-4320

FIG. 32 FRONT MASTER CYLINDER

REF. NO.	PART NO.	DESCRIPTION	Q'TY	REMARKS
1	36Y-25850-00	MASTER CYLINDER ASSY	1	
2	36Y-25852-00	.CAP, reservoir	1	
3	98706-04012	.SCREW, flat head	2	
4	36Y-25854-00	.DIAPHRAGM, reservoir	1	
5	36Y-W0041-00	.CYLINDER KIT, master	1	
6	36Y-25867-00	BRACKET, master cylinder	1	
7	91316-06025	BOLT	2	
8	92906-06100	WASHER, spring	2	
9	47X-25872-00	HOSE, brake 1	1	
10	47X-25873-01	HOSE, brake 2	1	
11	47X-25873-10	HOSE, brake 2	1	
12	90401-10096	BOLT, union	4	
13	90201-10118	WASHER, plate	8	
14	47X-25885-00	JOINT	1	
15	97306-06025	BOLT	1	
16	92906-06100	WASHER, spring	1	
17	47X-25874-00	HOSE, brake	1	
18	47X-25874-10	HOSE, brake	1	
19	90401-10095	BOLT, union	3	
20	90201-10118	WASHER, plate	9	
21	47X-25875-10	HOLDER, brake hose 1	1	
22	47X-25876-10	HOLDER, brake hose 2	1	
23	4L0-25862-00	BOOT, master cylinder	1	
24	90338-09012	PLUG	2	

E12

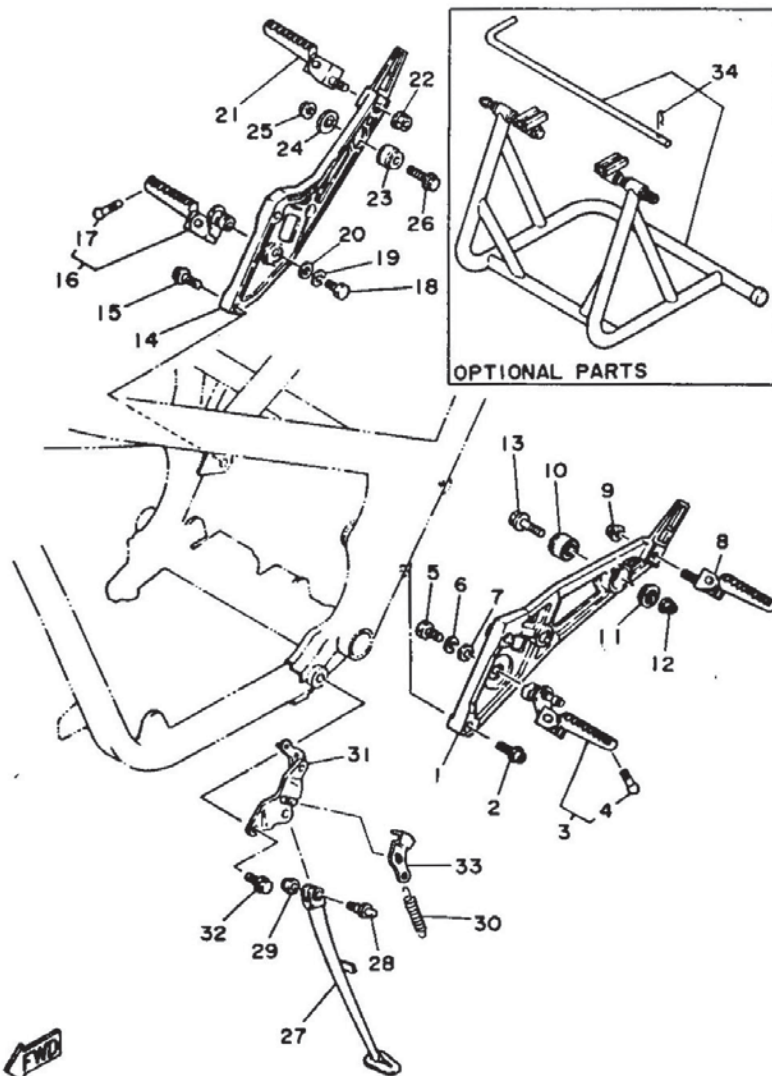


52X171-5330

FIG. 33 STAND. FOOTREST

REF. NO.	PART NO.	DESCRIPTION	Q'TY	REMARKS
1	47X-27442-00	BRACKET 2	1	
2	90109-082A1	BOLT	2	
3	51X-27410-00	FRONT FOOTREST ASSY (LEFT)	1	
4	90109-083A2	.BOLT	1	
5	97312-10030	BOLT	1	
6	92901-10100	WASHER, spring	1	
7	92990-10600	WASHER, plate	1	
8	51X-27430-00	REAR FOOTREST ASSY 1	1	
9	90185-10115	NUT, self-locking	1	
10	29L-27414-01	DAMPER, footrest	1	
11	90209-08258	WASHER	1	
12	90185-08106	NUT, self-locking	1	
13	90105-08319	BOLT, washer based	1	
14	47X-27443-00	BRACKET 3	1	
15	90109-082A1	BOLT	2	
16	51X-27420-00	FRONT FOOTREST ASSY (RIGHT)	1	
17	90109-083A2	.BOLT	1	
18	97312-10030	BOLT	1	
19	92901-10100	WASHER, spring	1	
20	92990-10600	WASHER, plate	1	
21	51X-27440-00	REAR FOOTREST ASSY 2	1	
22	90185-10115	NUT, self-locking	1	
23	29L-27414-01	DAMPER, footrest	1	
24	90209-08258	WASHER	1	
25	90185-08106	NUT, self-locking	1	
26	90105-08319	BOLT, washer based	1	
27	47X-27311-00	STAND, side	1	
28	90109-10474	BOLT	1	

E13

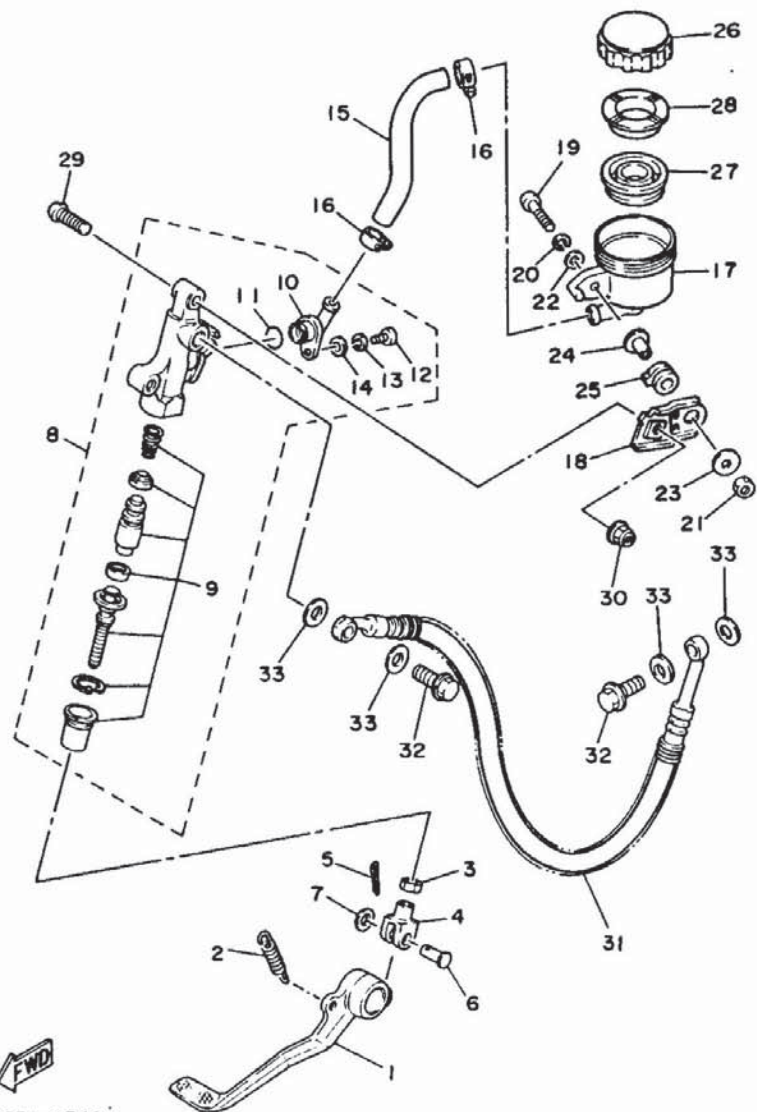


52X171-5330

FIG. 33 STAND. FOOTREST

REF. NO.	PART NO.	DESCRIPTION	Q'TY	REMARKS
29	90185-10037	NUT, self-locking	1	
30	90506-29266	SPRING, tension	1	
31	52X-27321-00	BRACKET, side stand	1	
32	95811-10020	BOLT, flange	2	
33	52X-27315-00	LINK, side stand	1	
34	51X-W0780-00	MAIN STAND KIT	1 AP	

E14

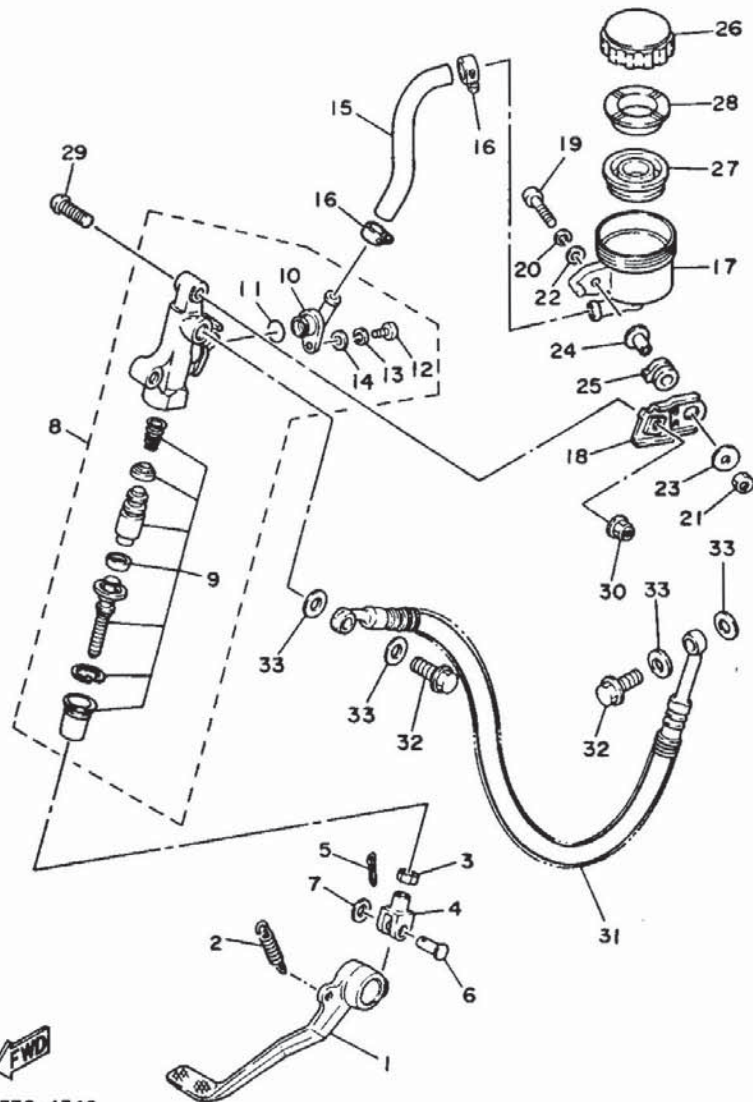


47X332-4340

FIG. 34 REAR MASTER CYLINDER

REF. NO.	PART NO.	DESCRIPTION	Q'TY	REMARKS
1	47X-27211-00	PEDAL, brake	1	
2	90506-20369	SPRING, tension	1	
3	95301-08700	NUT	1	
4	47X-27222-00	JOINT	1	
5	91401-16012	PIN, cotter	1	
6	90240-08013	PIN, clevis	1	
7	90201-08083	WASHER, plate	1	
8	47X-25850-50	MASTER CYLINDER ASSY	1	
9	47X-W0042-50	.CYLINDER KIT, master	1	
10	47X-2582A-50	.JOINT	1	
11	93210-15620	.O-RING	1	
12	98511-04012	.SCREW, pan head	1	
13	92902-04100	.WASHER, spring	1	
14	92901-04600	.WASHER, plate	1	
15	47X-25895-00	HOSE, reservoir	1	
16	90460-12268	CLAMP, hose	2	
17	47X-25894-00	TANK, reservoir	1	
18	47X-27332-01	BRACKET	1	
19	92501-06035	SCREW, pan head	1	
20	92990-06100	WASHER, spring	1	
21	95302-06600	NUT	1	
22	92901-06200	WASHER, plain	1	
23	90201-06067	WASHER, plate	1	
24	90387-060M9	COLLAR	1	
25	47X-27414-01	DAMPER, footrest	1	
26	1A1-25852-00	CAP, reservoir	1	
27	360-25854-00	DIAPHRAGM, reservoir	1	
28	360-25855-01	BUSH, diaphragm	1	

E15



47X332-4340

FIG. 34 REAR MASTER CYLINDER

REF. NO.	PART NO.	DESCRIPTION	Q'TY	REMARKS
29	90157-08066	SCREW, pan head	2	
30	90185-08106	NUT, self-locking	2	
31	47X-25872-52	HOSE, brake l	1	
32	90401-10096	BOLT, union	2	
33	90201-10118	WASHER, plate	4	

F2

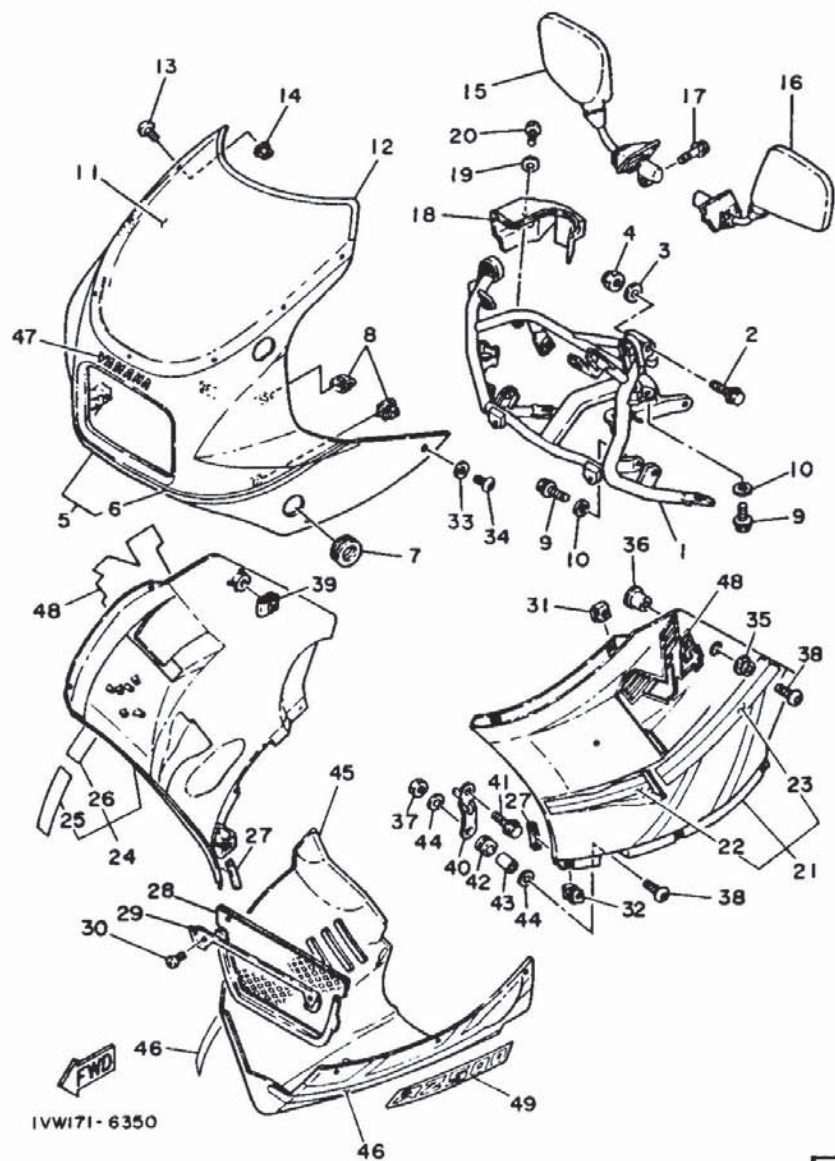


FIG. 35 COWLING 1

REF. NO.	PART NO.	DESCRIPTION	Q'TY	REMARKS
1	1GE-28356-00	STAY 1	1	
2	95026-08045	BOLT, flange	2	
3	92906-08100	WASHER, spring	2	
4	95306-08800	NUT	2	
5	47X-W2838-01-07	COWLING ASSY	1	white/chappy red
6	51X-28391-00	.GRAPHIC 1	1	for w/cpr
7	90480-35394	GROMMET	2	
8	47X-21736-00	NUT,plate	6	
9	97326-06016	BOLT	4	
10	92906-06100	WASHER, spring	4	
11	52X-2837U-00	SCREEN	1	
12	47X-28346-00	MOLE 2	1	
13	90150-05019	SCREW, round head	7	
14	90176-05054	NUT, crown	7	
15	47X-26290-00	BACK MIRROR ASSY (RIGHT)	1	
16	47X-26290-10	BACK MIRROR ASSY (LEFT)	1	
17	91026-08025	BOLT, flange	2	
18	47X-28365-00	COVER	1	
19	90201-05033	WASHER, plate	1	
20	98906-05012	SCREW, bind	1	
21	47X-W2835-00-03	PANEL COMP. 1	1	white/chappy red
22	51X-2839A-00	.GRAPHIC 7	1	for w/cpr
23	51X-2839F-00	.GRAPHIC 9	1	for w/cpr
24	47X-W2836-00-03	PANEL COMP. 2	1	white/chappy red
25	51X-2839E-00	.GRAPHIC 8	1	for w/cpr
26	51X-2839G-00	.GRAPHIC 10	1	for w/cpr
27	47X-28345-00	MOLE 1	2	
28	47X-28343-00	GUARD, stone	1	

F3

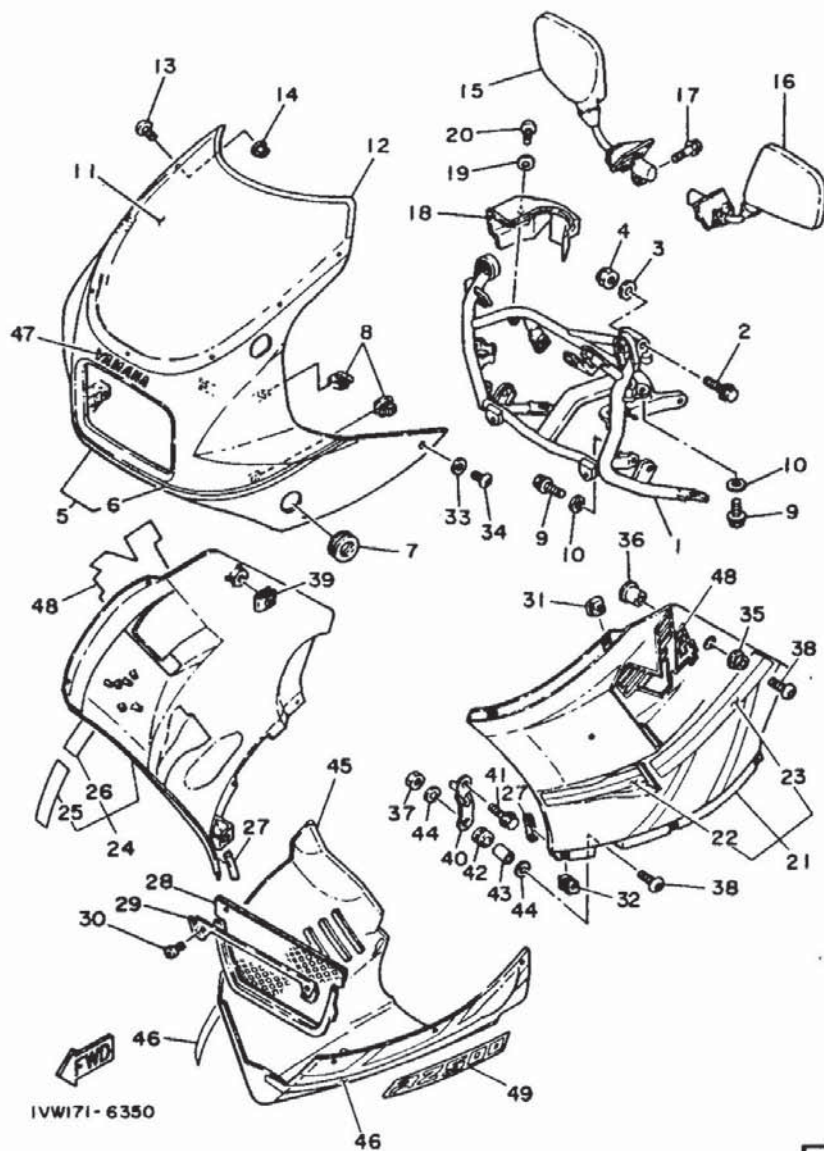


FIG. 35 COMLING 1

REF. NO.	PART NO.	DESCRIPTION	Q'TY	REMARKS
29	47X-28396-00	PLATE 1	1	
30	98906-05012	SCREW, bind	2	
31	90183-05024	NUT, spring	9	
32	47X-28362-00	NUT	1	
33	90202-06007	WASHER, plate	10	
34	90110-05079	BOLT, hexagon socket head	10	
35	90480-13398	GROMMET	2	
36	90387-065J6	COLLAR	2	
37	95301-06700	NUT	2	
38	90110-06083	BOLT, hexagon socket head	4	
39	47X-21736-00	NUT, plate	1	
40	47X-28321-01	STAY, leg shield (LEFT)	2	
41	95806-08016	BOLT, flange	2	
42	90480-12392	GROMMET	2	
43	90387-060A3	COLLAR	2	
44	90201-06059	WASHER, plate	4	
45	47X-W2839-01-2X	LOWER COVER COMP.	1	
46	51X-28301-00	GRAPHIC SET, lower cover	1	for w/cpr
47	1X0-24161-10	EMBLEM 1	1	
48	51X-28328-10	EMBLEM	2	
49	52X-28315-00	EMBLEM	2	

F4

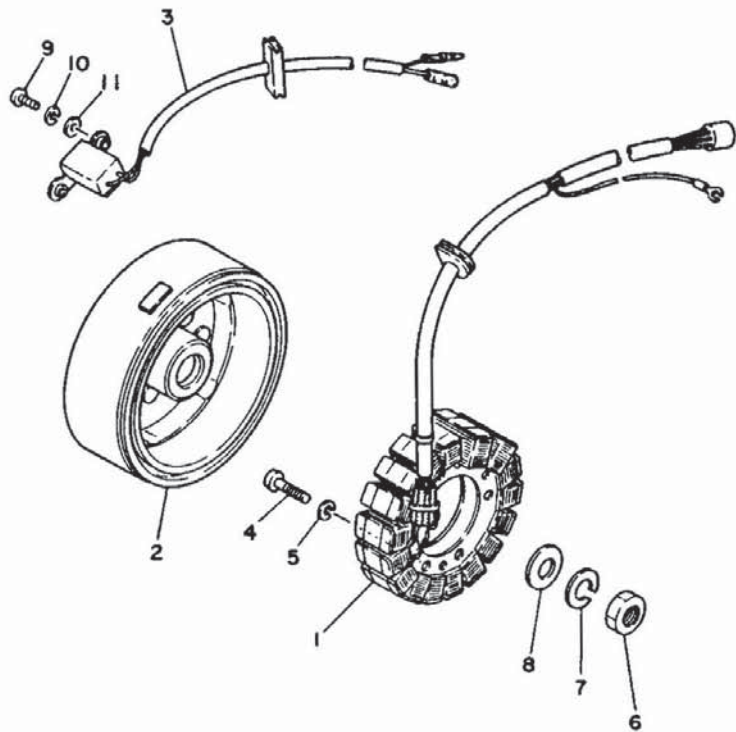


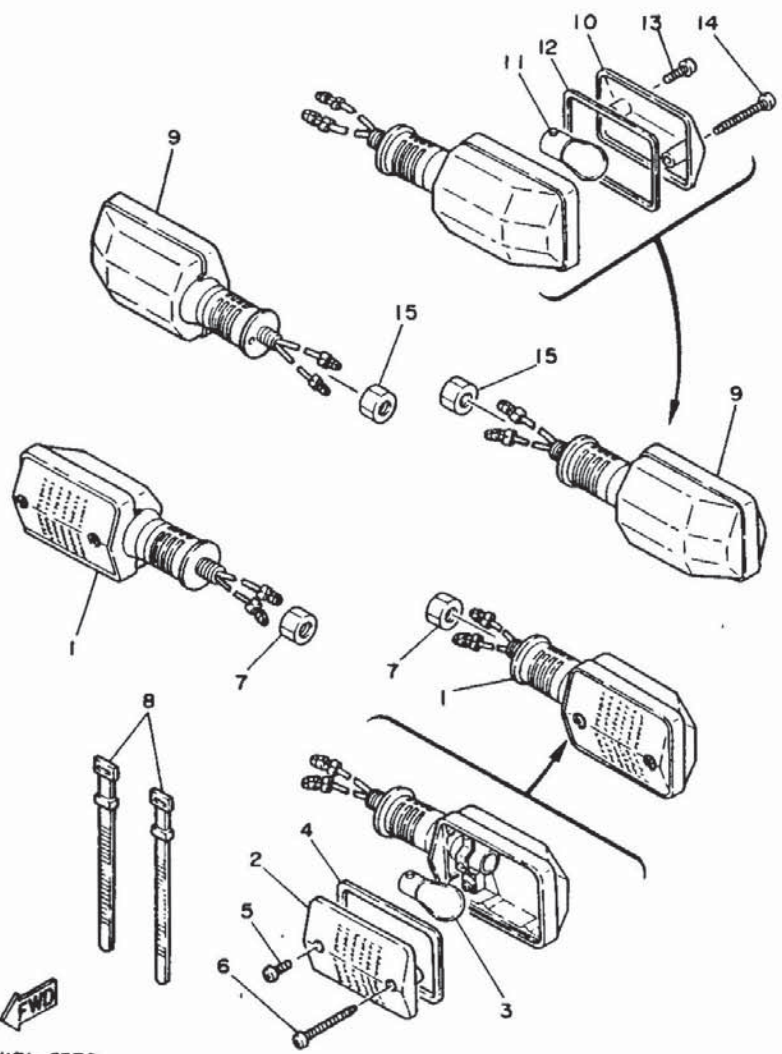
FIG. 36 GENERATOR

REF. NO.	PART NO.	DESCRIPTION	Q'TY	REMARKS
1	47X-81410-51	STATOR ASSY	1	
2	47X-81450-51	ROTOR ASSY	1	
3	47X-81670-50	PICK-UP ASSY	1	
4	92502-06035	SCREW, pan head	3	
5	92990-06100	WASHER, spring	3	
6	90170-12067	NUT	1	
7	92902-12100	WASHER, spring	1	
8	90201-12677	WASHER, plate	1	
9	98501-05016	SCREW, pan head	2	
10	92901-05100	WASHER, spring	2	
11	92901-05600	WASHER, plate	2	



47X332-4360

F5

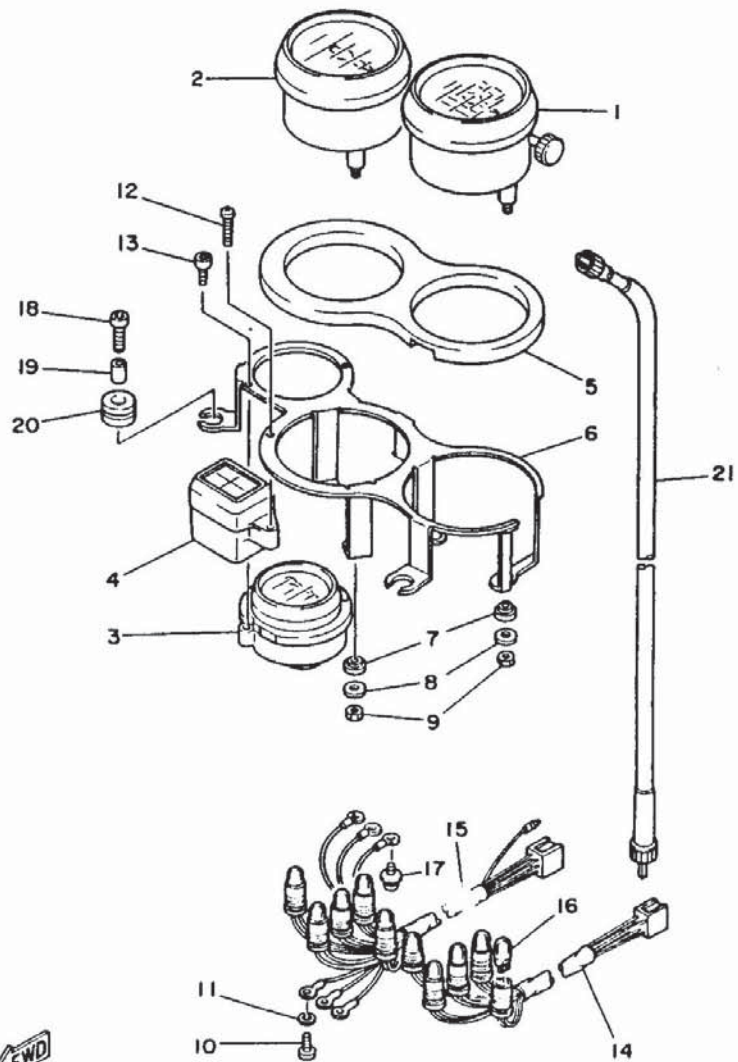


52X171-5370

FIG. 37 FLASHER LIGHT

REF. NO.	PART NO.	DESCRIPTION	Q'TY	REMARKS
1	5Y1-83310-70	FRONT FLASHER LIGHT ASSY 1	2	
2	5Y1-83312-00	.LENS, flasher	1	
3	256-83311-70	.BULB (12V-27W)	1	
4	5Y1-83313-00	.GASKET, flasher lens	1	
5	98503-04010	.SCREW, pan head	1	
6	97701-40530	.SCREW, tapping	1	
7	95316-12700	NUT	2	
8	437-83936-00	BAND, switch cord	2	
9	5Y1-83330-70	REAR FLASHER LIGHT ASSY 1	2	
10	5Y1-83312-00	.LENS, flasher	1	
11	256-83311-70	.BULB (12V-27W)	1	
12	5Y1-83313-00	.GASKET, flasher lens	1	
13	98503-04010	.SCREW, pan head	1	
14	97701-40530	.SCREW, tapping	1	
15	95316-12700	NUT	2	

F6

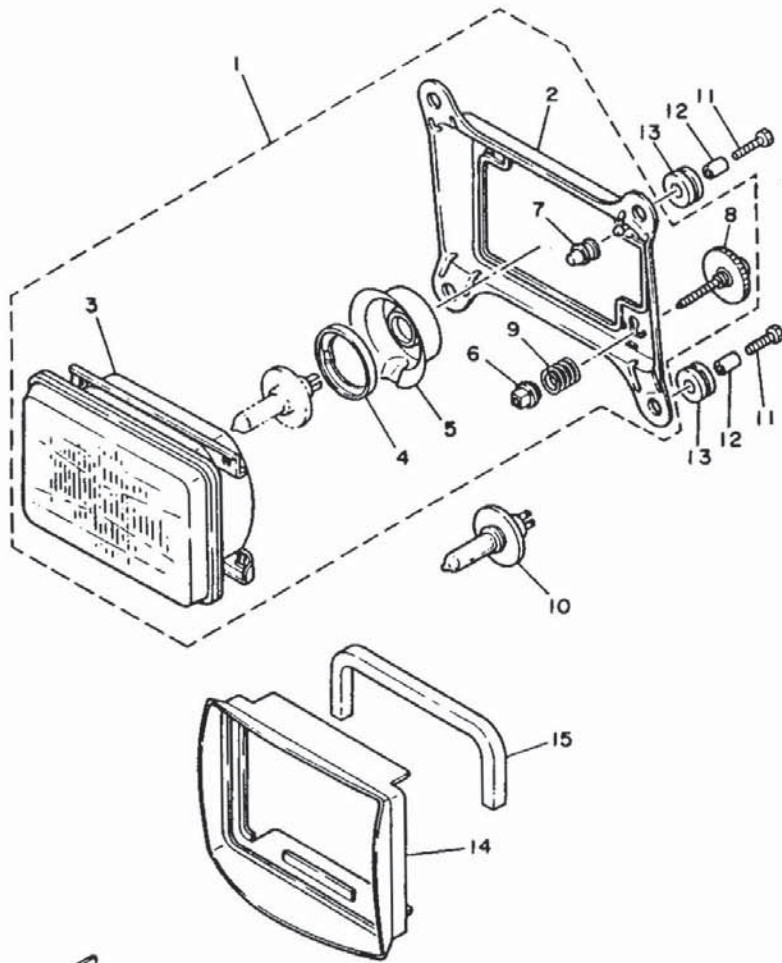


51L010-4370

FIG. 38 METER

REF. NO.	PART NO.	DESCRIPTION	Q'TY	REMARKS
1	47X-83570-F0	SPEEDOMETER ASSY	1	
2	47X-83540-00	TACHOMETER ASSY	1	
3	47X-83590-00	WATER TEMPERATURE ASSY	1	
4	47X-83530-00	PILOT LIGHT ASSY	1	
5	47X-83513-00	DAMPER	1	
6	47X-83519-00	BRACKET, meter	1	
7	584-83523-00	DAMPER	4	
8	4U5-83524-00	WASHER, special	4	
9	95306-05600	NUT	4	
10	98501-03012	SCREW, pan head	3	
11	92990-03100	WASHER, spring	3	
12	47X-83616-00	SCREW, tapping	1	
13	91316-03016	BOLT	2	
14	47X-83509-00	SOCKET CORD ASSY	1	
15	47X-83520-00	SOCKET CORD ASSY	1	
16	4G1-84744-00	BULB (12V-3.4W)	10	
17	90159-03102	SCREW, with washer	3	
18	90110-06087	BOLT, hexagon socket head	3	
19	90387-065L7	COLLAR	3	
20	90480-14229	GROMMET	3	
21	51L-83550-00	SPEEDOMETER CABLE ASSY	1	

F7




 52X171-5390

FIG. 39 HEADLIGHT

REF. NO.	PART NO.	DESCRIPTION	Q'TY	REMARKS
1	52X-84303-A0	HEADLIGHT UNIT ASSY	1	
2	51L-84311-00	.BODY, headlight	1	
3	52X-84320-A0	.LENS ASSY	1	
4	2F9-84375-00	.FITTING PLATE, bulb	1	
5	2F9-84397-01	.COVER, socket	1	
6	51L-84334-00	.NUT, adjusting	2	
7	51L-84310-00	.HOLDER	1	
8	47X-84337-00	.BOLT, special	2	
9	51L-84332-00	.SPRING, screw	2	
10	*	BULB (12V-60/55W)	1	LM
11	97306-06030	BOLT	4	
12	90387-07391	COLLAR	4	
13	90480-14229	GROMMET	4	
14	51L-84196-01	COVER, socket	1	
15	47X-84345-00	DAMPER, headlight	1	

F8

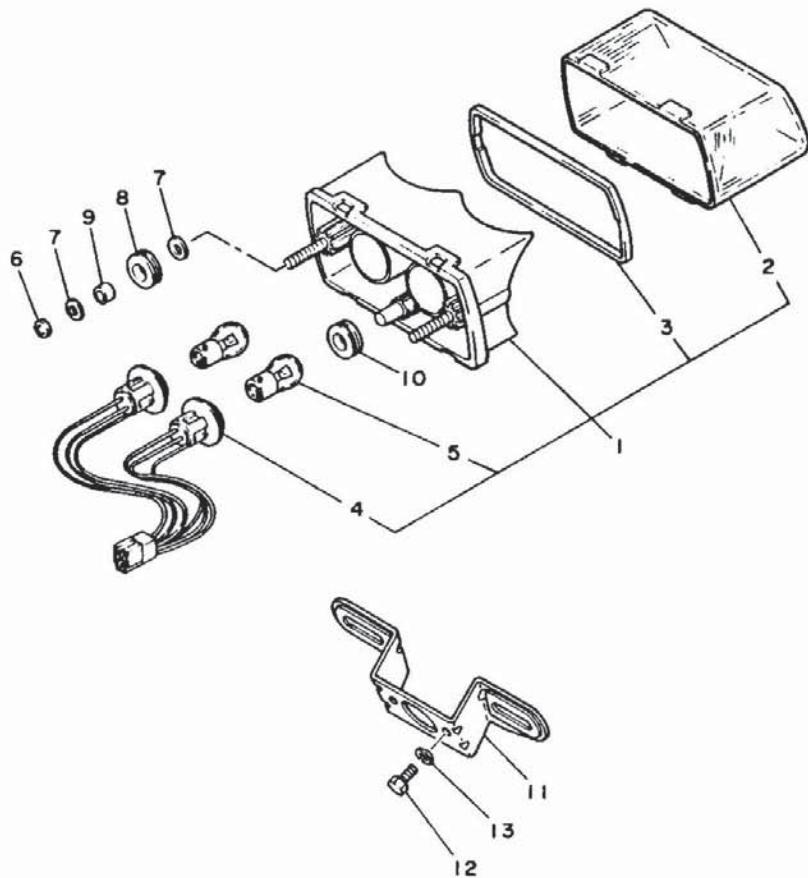


FIG. 40 TAILLIGHT

REF. NO.	PART NO.	DESCRIPTION	Q'TY	REMARKS
1	52X-84710-60	TAILLIGHT UNIT ASSY	1	
2	47X-84721-00	.LENS, taillight	1	
3	47X-84723-00	.GASKET, tail lens	1	
4	47X-84735-00	.CORD ASSY	1	
5	256-84714-61	.BULB (12V-27/8W)	2	
6	95302-06600	NUT	2	
7	90201-063J2	WASHER, plate	4	
8	90480-18407	GROMMET	2	
9	90387-06605	COLLAR	2	
10	90480-18407	GROMMET	1	
11	52X-84751-01	BRACKET, licence	1	
12	97302-06012	BOLT	2	
13	92901-06700	WASHER, wave	2	



52X171-5400

F9

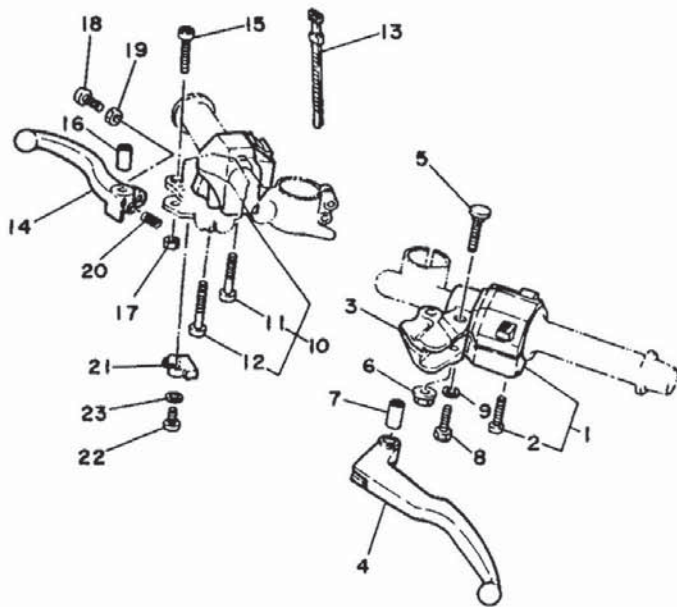


FIG. 41 HANDLE SWITCH. LEVER

REF. NO.	PART NO.	DESCRIPTION	Q'TY	REMARKS
1	52X-83973-00	SWITCH, handle 3	1	
2	98506-05035	.SCREW, pan head	2	
3	29L-82911-01	HOLDER, lever 1	1	
4	29L-83912-01	LEVER 1	1	
5	31A-83945-00	BOLT, lever	1	
6	95706-06100	NUT, flange	1	
7	31A-83913-00	COLLAR, lever 1	1	
8	97306-06025	BOLT	1	
9	92906-06100	WASHER, spring	1	
10	52X-83976-00	SWITCH, handle 1	1	
11	98506-05040	.SCREW, pan head	1	
12	98506-05045	.SCREW, pan head	1	
13	437-83936-00	BAND, switch cord	2	
14	36Y-83922-00	LEVER 2	1	
15	90110-06074	BOLT, hexagon socket head	1	
16	36Y-83913-00	COLLAR, lever 1	1	
17	95606-06100	NUT, u	1	
18	90149-06153	SCREW	1	
19	90170-06010	NUT	1	
20	90501-10312	SPRING, compression	1	
21	36Y-83980-00	FRONT STOP SWITCH ASSY	1	
22	98506-04018	SCREW, pan head	1	
23	92906-04600	WASHER, plate	1	



47X332-4410

F10